

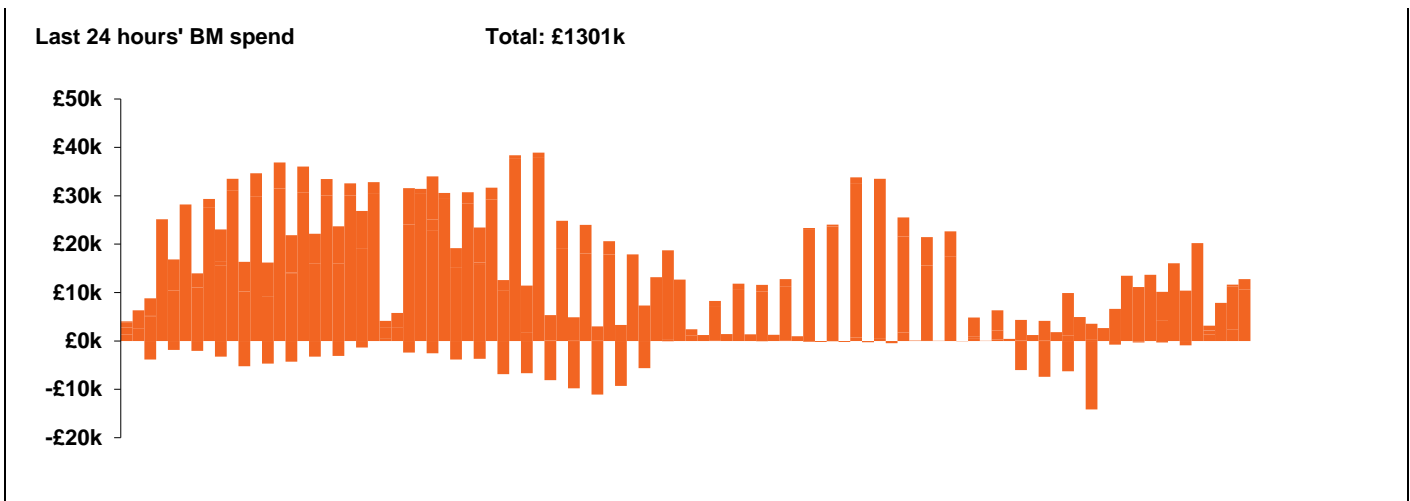
**National Electricity  
Transmission System Status Report**



**National Electricity Transmission System Status Report**  
Monday 08 June 2020

Today's High Level Risk Status Forecast for the next 24h			
General Status		Voltage	
Demand		System Inertia	
System Margins		Weather	
Generation		Transmission	
Active Constraints			

<a href="#">Today's Minimum De-Rated Margin</a>	6395 (SP 37)	
<a href="#">System Warnings</a>	None	
Current BMU Largest Loss Risk	Generation	800 MW
	Demand	560 MW

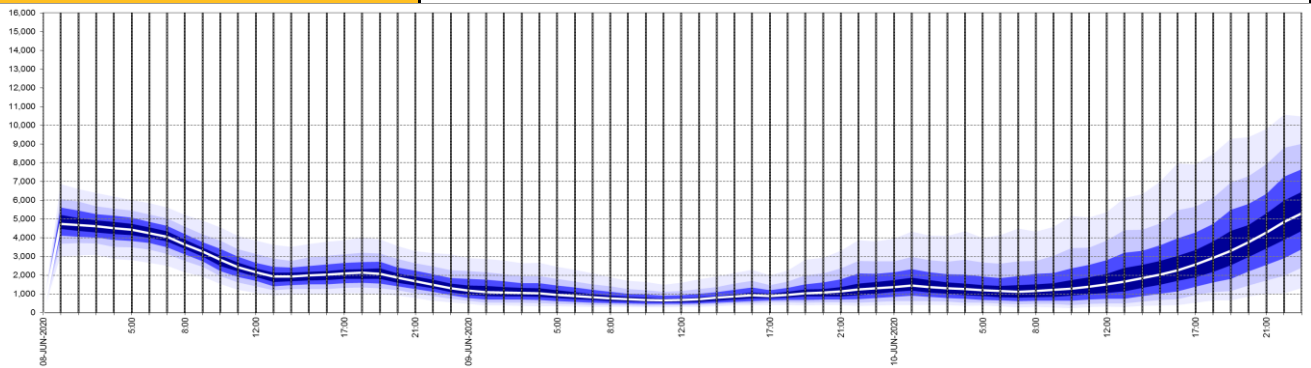


Yesterday's Market Summary	
<a href="#">Cash out price (Max)</a>	£44.50 (SP 1 & 12)
<a href="#">Cash Out Price (Min)</a>	£0.50 (SP 44 & 45)
<a href="#">Peak Demand Yesterday</a>	27,255 MW

**Interconnectors  
Net Transfer Capacity (MWs)**

Today	Import	Export	
Netherlands (BritNed)	1100	1133	Fully available
France (IFA)	2000	2000	Fully available
Belgium (Nemo)	1013	1013	Fully Available
Ireland (EWIC)	500	530	Fully Available
Northern Ireland (MOYLE)	500	500	Fully Available

**Wind Power Forecast**

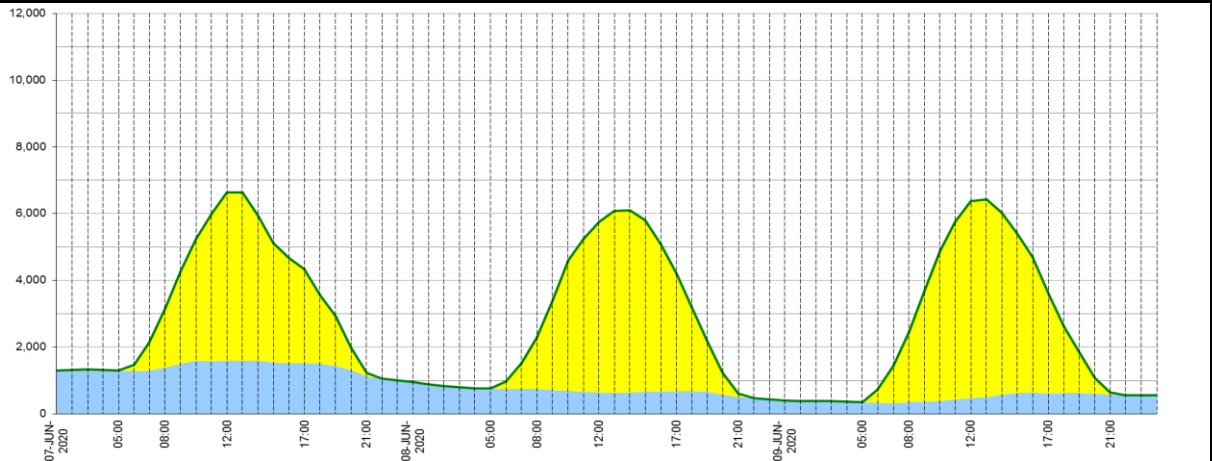


Key:

**Expected embedded generation (MWs)**

**Embedded Generation Forecast**

	07-JUN-2020					08-JUN-2020					09-JUN-2020						
	05:00	08:00	12:00	17:00	21:00	00:00	05:00	08:00	12:00	17:00	21:00	00:00	05:00	08:00	12:00	17:00	21:00
Solar (MW)	1	1760	5040	2810	101	0	1	1544	5108	3520	103	0	0	2122	5899	3003	76
Wind (MW)	1289	1388	1594	1524	1123	960	757	738	638	671	503	394	354	339	472	611	571
STOR (MW)	0	0	0	0	0	0	0	0	0	0	0	0	0	0	0	0	0
<b>Total (MW)</b>	<b>1290</b>	<b>3148</b>	<b>6634</b>	<b>4334</b>	<b>1224</b>	<b>960</b>	<b>758</b>	<b>2282</b>	<b>5746</b>	<b>4191</b>	<b>606</b>	<b>394</b>	<b>354</b>	<b>2461</b>	<b>6371</b>	<b>3614</b>	<b>647</b>



Weather	Source	Commentary
Latest forecast (Summary)	<a href="#">Met Office</a> <a href="#">SEPA</a> <a href="#">Natural Resources Wales</a>	<b>Today:</b> Most parts dry with some sunshine but scattered, mostly light showers may affect eastern coasts and parts of southwest England and Wales. A little warmer for many, especially eastern England.
		<b>Tonight:</b> Most places dry but a rather chilly night where clear periods develop, these most likely across parts of southwest England and Wales, Northern Ireland and eastern England.
General Weather Concerns  e.g. wind, rain, snow, flooding, GB Weather Warnings	<a href="#">Met Office Weather Warnings</a> <a href="#">SEPA</a> <a href="#">Natural Resources Wales</a>	<b>UK Weather Warnings</b> None   <b>UK Flood Warnings:</b> None

*Contains public sector information licensed under the Open Government Licence v1.0*

Further Information	
BM Reports	<a href="https://www.bmreports.com">https://www.bmreports.com</a>
System Balancing Reports	<a href="https://www.nationalgrideso.com/balancing-data/system-balancing-reports">https://www.nationalgrideso.com/balancing-data/system-balancing-reports</a>
Forecast Volumes and Costs	<a href="https://www.nationalgrideso.com/balancing-data/forecast-volumes-and-costs">https://www.nationalgrideso.com/balancing-data/forecast-volumes-and-costs</a>
NGESO Insights	<a href="https://www.nationalgrideso.com/insights">https://www.nationalgrideso.com/insights</a>