

**National Electricity  
Transmission System Status Report**

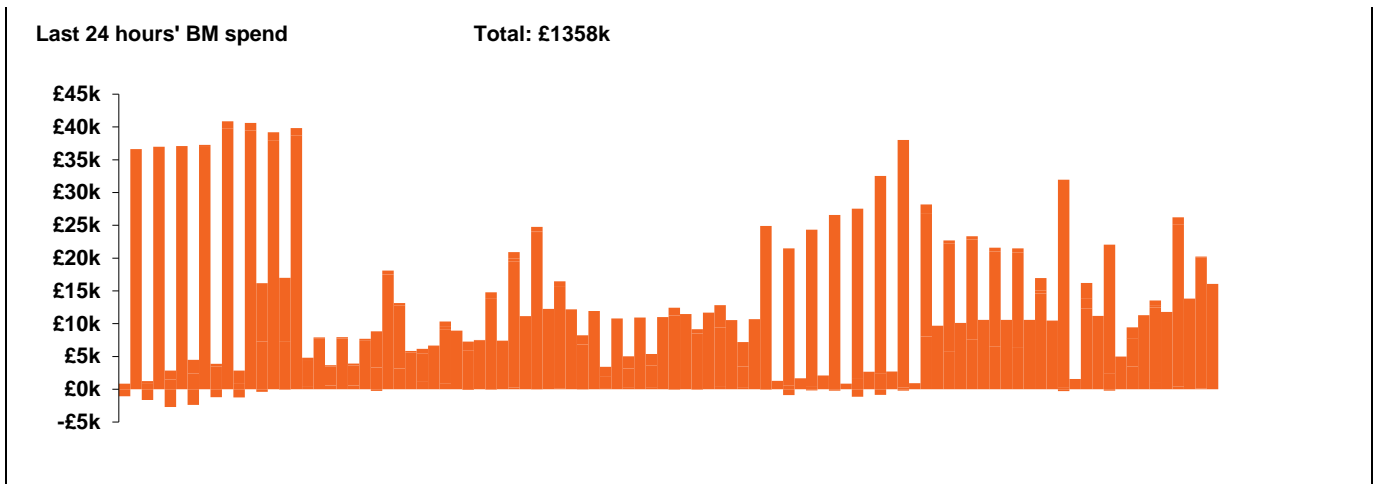


**nationalgrid**ESO

**National Electricity Transmission System Status Report**  
Tuesday 02 June 2020

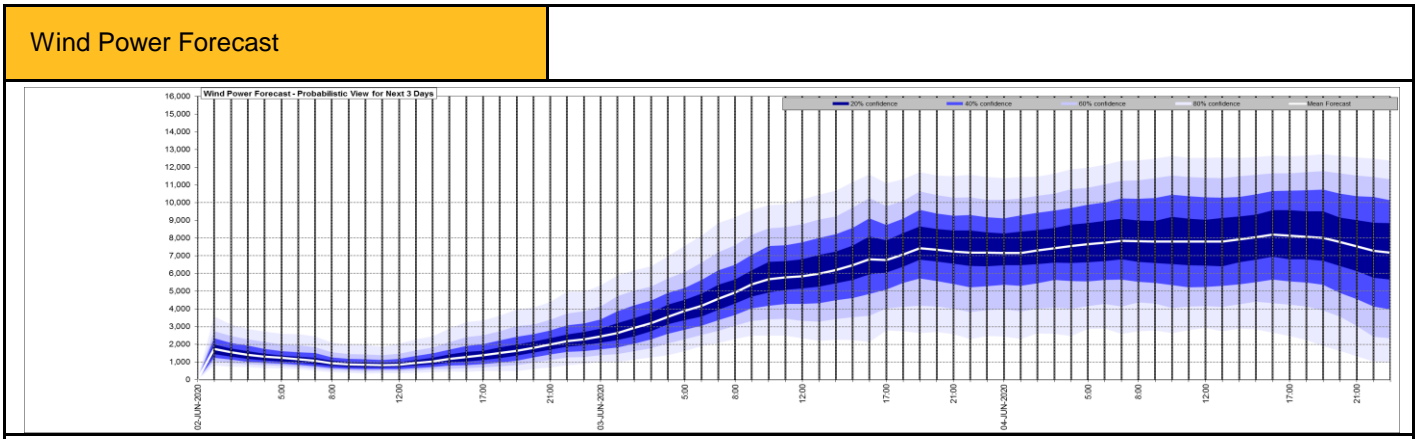
| Today's High Level Risk Status Forecast for the next 24h |  |                |  |
|--|--|----------------|--|
| General Status   |  | Voltage        |  |
| Demand   |  | System Inertia |  |
| System Margins   |  | Weather        |  |
| Generation   |  | Transmission   |  |
| Active Constraints                                       |  |                |  |

|   |             |        |
|---|-------------|--------|
| <a href="#">Today's Minimum De-Rated Margin</a> | 5805(SP 38) |        |
| <a href="#">System Warnings</a>                 | None        |        |
| Current BMU Largest Loss Risk                   | Generation  | 800 MW |
|   | Demand      | 560 MW |



| Yesterday's Market Summary            |                   |
|---------------------------------------|-------------------|
| <a href="#">Cash out price (Max)</a>  | £0.80 (SP 32)     |
| <a href="#">Cash Out Price (Min)</a>  | £43.50 (SP 36-40) |
| <a href="#">Peak Demand Yesterday</a> | 27715 MW          |

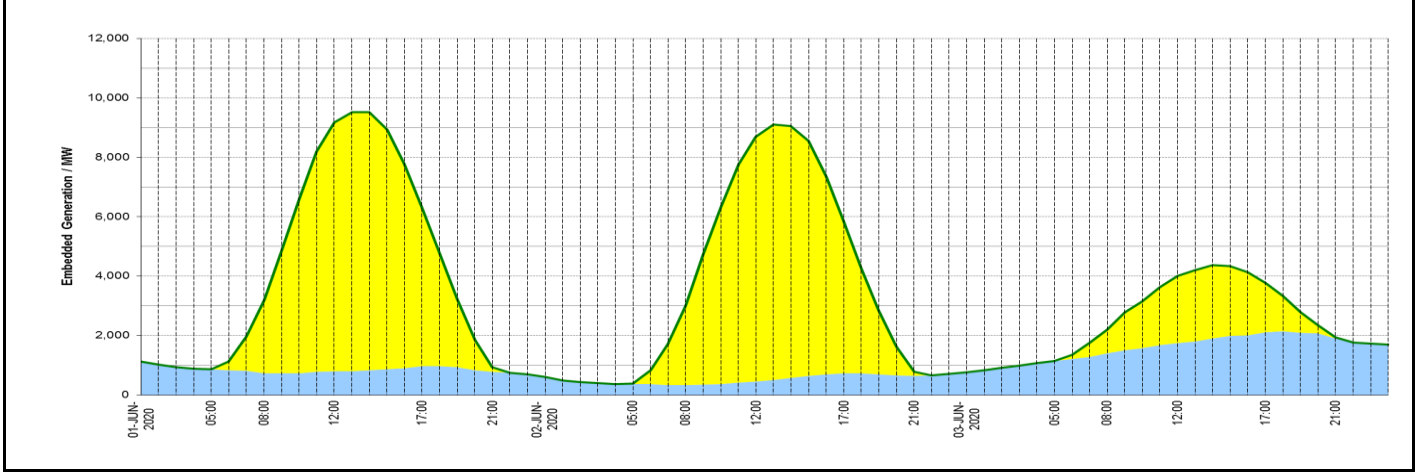
| Interconnectors<br>Net Transfer Capacity (MWs) |        |        |                 |
|--|--------|--------|-----------------|
| Today  | Import | Export |                 |
| Netherlands (BritNed)                          | 1100   | 1133   | Fully available |
| France (IFA)                                   | 2000   | 2000   | Fully available |
| Belgium (Nemo)                                 | 1013   | 1013   | Fully Available |
| Ireland (EWIC)                                 | 500    | 530    | Fully Available |
| Northern Ireland (MOYLE)                       | 500    | 500    | Fully Available |



Key:

### Expected embedded generation (MWs)

| Embedded Generation Forecast | 01-JUN-2020 |             |             |             |            |            | 02-JUN-2020 |             |             |             |            |            | 03-JUN-2020 |             |             |             |             |  |
|------------------------------|-------------|-------------|-------------|-------------|------------|------------|-------------|-------------|-------------|-------------|------------|------------|-------------|-------------|-------------|-------------|-------------|--|
|                              | 05:00       | 08:00       | 12:00       | 17:00       | 21:00      | 00:00      | 05:00       | 08:00       | 12:00       | 17:00       | 21:00      | 00:00      | 05:00       | 08:00       | 12:00       | 17:00       | 21:00       |  |
| Solar (MW)                   | 1           | 2470        | 8380        | 5320        | 146        | 0          | 13          | 2671        | 8230        | 5135        | 133        | 0          | 0           | 803         | 2248        | 1672        | 33          |  |
| Wind (MW)                    | 876         | 734         | 792         | 976         | 790        | 618        | 370         | 333         | 460         | 727         | 642        | 769        | 1148        | 1401        | 1757        | 2107        | 1912        |  |
| STOR (MW)                    | 0           | 0           | 0           | 0           | 0          | 0          | 0           | 0           | 0           | 0           | 0          | 0          | 0           | 0           | 0           | 0           | 0           |  |
| <b>Total (MW)</b>            | <b>877</b>  | <b>3204</b> | <b>9172</b> | <b>6296</b> | <b>936</b> | <b>618</b> | <b>383</b>  | <b>3004</b> | <b>8690</b> | <b>5862</b> | <b>775</b> | <b>769</b> | <b>1148</b> | <b>2204</b> | <b>4005</b> | <b>3779</b> | <b>1945</b> |  |



| Weather  | Source   | Commentary   |
|--|--|--|
| Latest forecast (Summary)  | <a href="#">Met Office</a><br><a href="#">SEPA</a><br><a href="#">Natural Resources Wales</a>                  | <b>Today:</b><br>Most parts largely sunny, after any mist clears; turning very warm again by afternoon. Rain in the far northwest sinks south, with the odd downpour possible, most likely in south and east Scotland, followed by a sharp downturn in temperatures. |
|  |  | <b>Tonight:</b><br>Cloudier skies and outbreaks of rain develop more widely, although not reaching the southeast, while some parts dont see much. Freshening breeze. Mild in the south but chilly in north.  |
| General Weather Concerns<br>e.g. wind, rain, snow, flooding, GB Weather Warnings | <a href="#">Met Office Weather Warnings</a><br><a href="#">SEPA</a><br><a href="#">Natural Resources Wales</a> | <b>UK Weather Warnings</b><br>None<br><br><b>UK Flood Warnings:</b><br>None  |

*Contains public sector information licensed under the Open Government Licence v1.0*

| Further Information        |   |
|----------------------------|---|
| BM Reports                 | <a href="https://www.bmreports.com">https://www.bmreports.com</a>   |
| System Balancing Reports   | <a href="https://www.nationalgrideso.com/balancing-data/system-balancing-reports">https://www.nationalgrideso.com/balancing-data/system-balancing-reports</a>     |
| Forecast Volumes and Costs | <a href="https://www.nationalgrideso.com/balancing-data/forecast-volumes-and-costs">https://www.nationalgrideso.com/balancing-data/forecast-volumes-and-costs</a> |
| NGESO Insights             | <a href="https://www.nationalgrideso.com/insights">https://www.nationalgrideso.com/insights</a>   |