

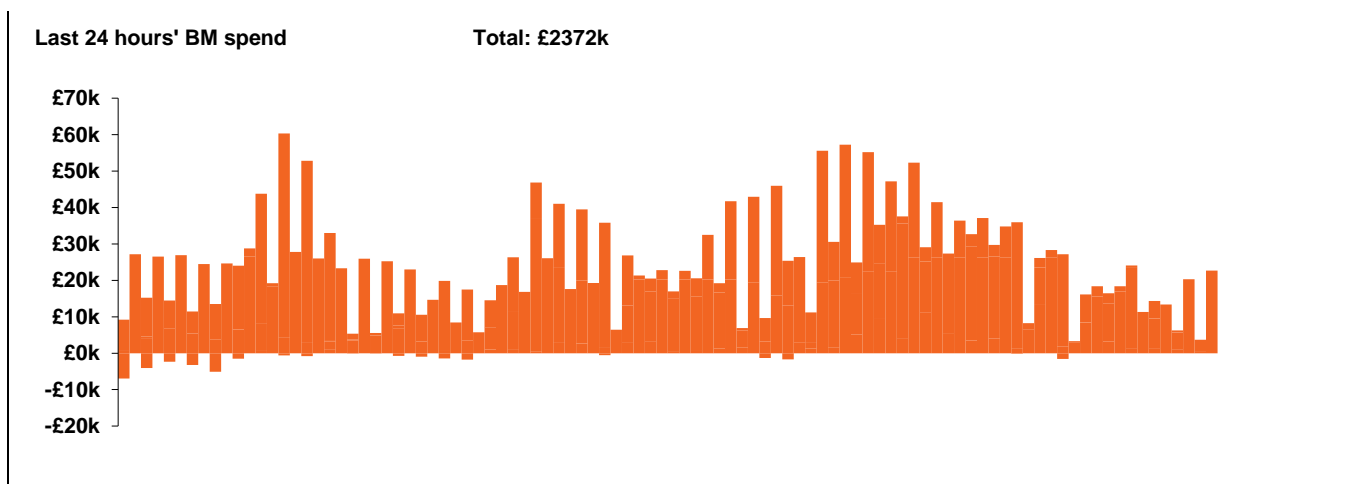
**National Electricity  
Transmission System Status Report**



**National Electricity Transmission System Status Report**  
Thursday 19 March 2020

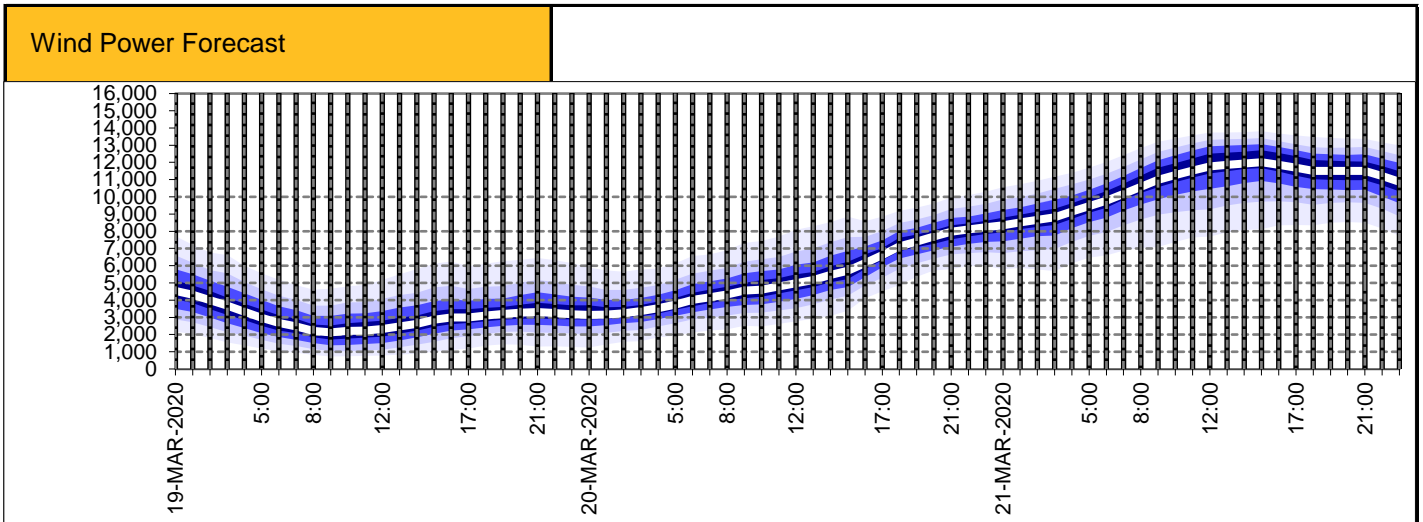
| Today's High Level Risk Status Forecast for the next 24h |  |                |  |
|--|--|----------------|--|
| General Status   |  | Voltage        |  |
| Demand   |  | System Inertia |  |
| System Margins   |  | Weather        |  |
| Generation   |  | Transmission   |  |
| Active Constraints                                       |  |                |  |

|   |               |         |
|---|---------------|---------|
| <a href="#">Today's Minimum De-Rated Margin</a> | -9.65 (SP 38) |         |
| <a href="#">System Warnings</a>                 | None          |         |
| Current BMU Largest Loss Risk                   | Generation    | 1260 MW |
|   | Demand        | 560 MW  |



| Yesterday's Market Summary            |                    |
|---------------------------------------|--------------------|
| <a href="#">Cash out price (Max)</a>  | £65.60/MWh (SP19)  |
| <a href="#">Cash Out Price (Min)</a>  | £1.95 /MWh (SP 14) |
| <a href="#">Peak Demand Yesterday</a> | 41,533 MW          |

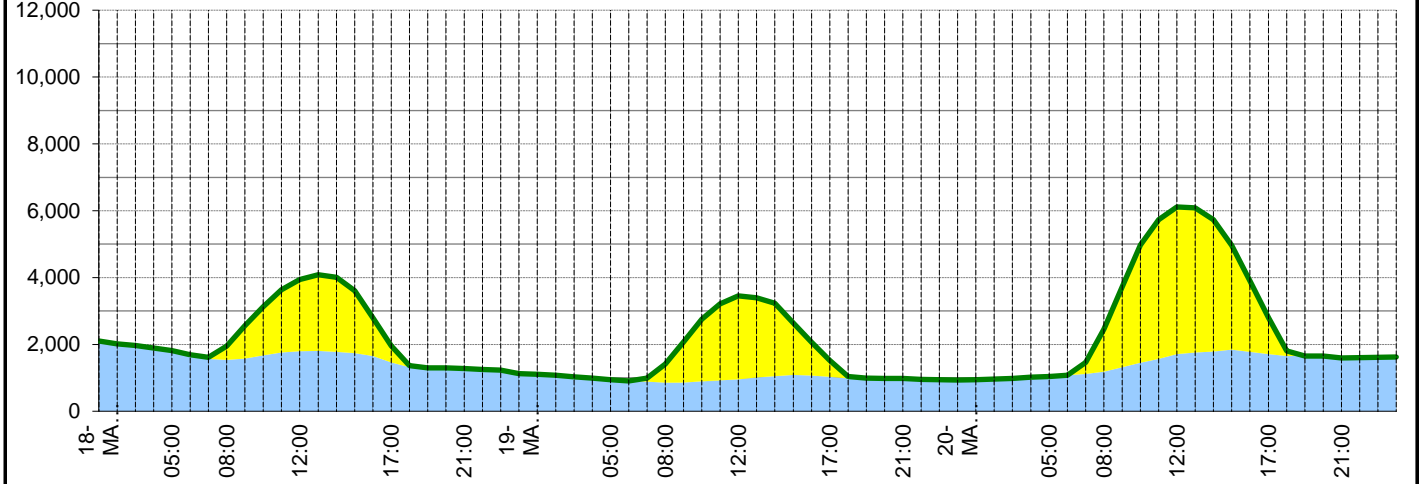
| Interconnectors             |        |        |                      |
|-----------------------------|--------|--------|----------------------|
| Net Transfer Capacity (MWs) |        |        |                      |
| Today                       | Import | Export |                      |
| Netherlands (BritNed)       | 1100   | 1133   | Fully available      |
| France (IFA)                | 2000   | 2000   | Fully available.     |
| Belgium (Nemo)              | 1013   | 1013   | Fully Available      |
| Ireland (EWIC)              | 0      | 0      | Outage               |
| Northern Ireland (MOYLE)    | 395    | 500    | Partially available. |



**Expected embedded generation (MWs)**

**Embedded Generation Forecast**

|                   | 18-MAR-2020 |             |             |             |             | 19-MAR-2020 |            |             |             |             | 20-MAR-2020 |            |             |             |             |             |             |
|-------------------|-------------|-------------|-------------|-------------|-------------|-------------|------------|-------------|-------------|-------------|-------------|------------|-------------|-------------|-------------|-------------|-------------|
|                   | 05:00       | 08:00       | 12:00       | 17:00       | 21:00       | 00:00       | 05:00      | 08:00       | 12:00       | 17:00       | 21:00       | 00:00      | 05:00       | 08:00       | 12:00       | 17:00       | 21:00       |
| Solar (MW)        | 0           | 420         | 2140        | 495         | 0           | 0           | 0          | 555         | 2502        | 490         | 0           | 0          | 0           | 1278        | 4407        | 1089        | 0           |
| Wind (MW)         | 1813        | 1533        | 1798        | 1463        | 1278        | 1124        | 945        | 854         | 949         | 1029        | 980         | 935        | 1043        | 1183        | 1706        | 1710        | 1596        |
| STOR (MW)         | 0           | 0           | 0           | 0           | 0           | 0           | 0          | 0           | 0           | 0           | 0           | 0          | 0           | 0           | 0           | 0           | 0           |
| <b>Total (MW)</b> | <b>1813</b> | <b>1953</b> | <b>3938</b> | <b>1958</b> | <b>1278</b> | <b>1124</b> | <b>945</b> | <b>1409</b> | <b>3451</b> | <b>1519</b> | <b>980</b>  | <b>935</b> | <b>1043</b> | <b>2461</b> | <b>6113</b> | <b>2799</b> | <b>1596</b> |



| Weather  | Source   | Commentary   |
|--|--|--|
| Latest forecast (Summary)  | <a href="#">Met Office</a><br><a href="#">SEPA</a><br><a href="#">Natural Resources Wales</a>                  | <p><b>Today:</b></p> <p>Across the southern or so third of the UK conditions mostly cloudy and colder than yesterday. Also some rain here, mainly South Wales. Otherwise brighter with sunny spells but also some showers, mainly Scotland.</p> <p><b>Tonight:</b></p> <p>Southern UK remaining mostly cloudy, cloud thick enough for a little patchy drizzle. Otherwise cold and frosty with clear periods, daytime showers becoming confined to coastal areas.</p> |
| General Weather Concerns<br>e.g. wind, rain, snow, flooding, GB Weather Warnings | <a href="#">Met Office Weather Warnings</a><br><a href="#">SEPA</a><br><a href="#">Natural Resources Wales</a> | <p><b>UK Weather Warnings</b><br/>None</p> <p><b>UK Flood Warnings:</b><br/>6 Flood Warnings issued in England</p>   |

*Contains public sector information licensed under the Open Government Licence v1.0*

| Further Information        |   |
|----------------------------|---|
| BM Reports                 | <a href="https://www.bmreports.com">https://www.bmreports.com</a>   |
| System Balancing Reports   | <a href="https://www.nationalgrideso.com/balancing-data/system-balancing-reports">https://www.nationalgrideso.com/balancing-data/system-balancing-reports</a>     |
| Forecast Volumes and Costs | <a href="https://www.nationalgrideso.com/balancing-data/forecast-volumes-and-costs">https://www.nationalgrideso.com/balancing-data/forecast-volumes-and-costs</a> |
| NGESO Insights             | <a href="https://www.nationalgrideso.com/insights">https://www.nationalgrideso.com/insights</a>   |