

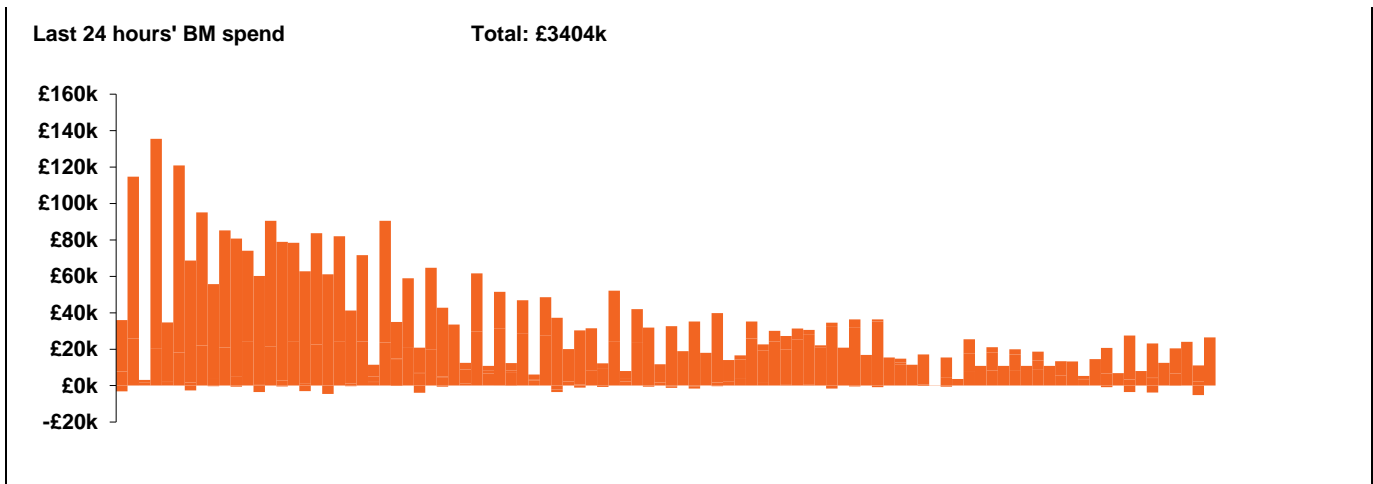
**National Electricity  
Transmission System Status Report**



**National Electricity Transmission System Status Report**  
Wednesday 18 March 2020

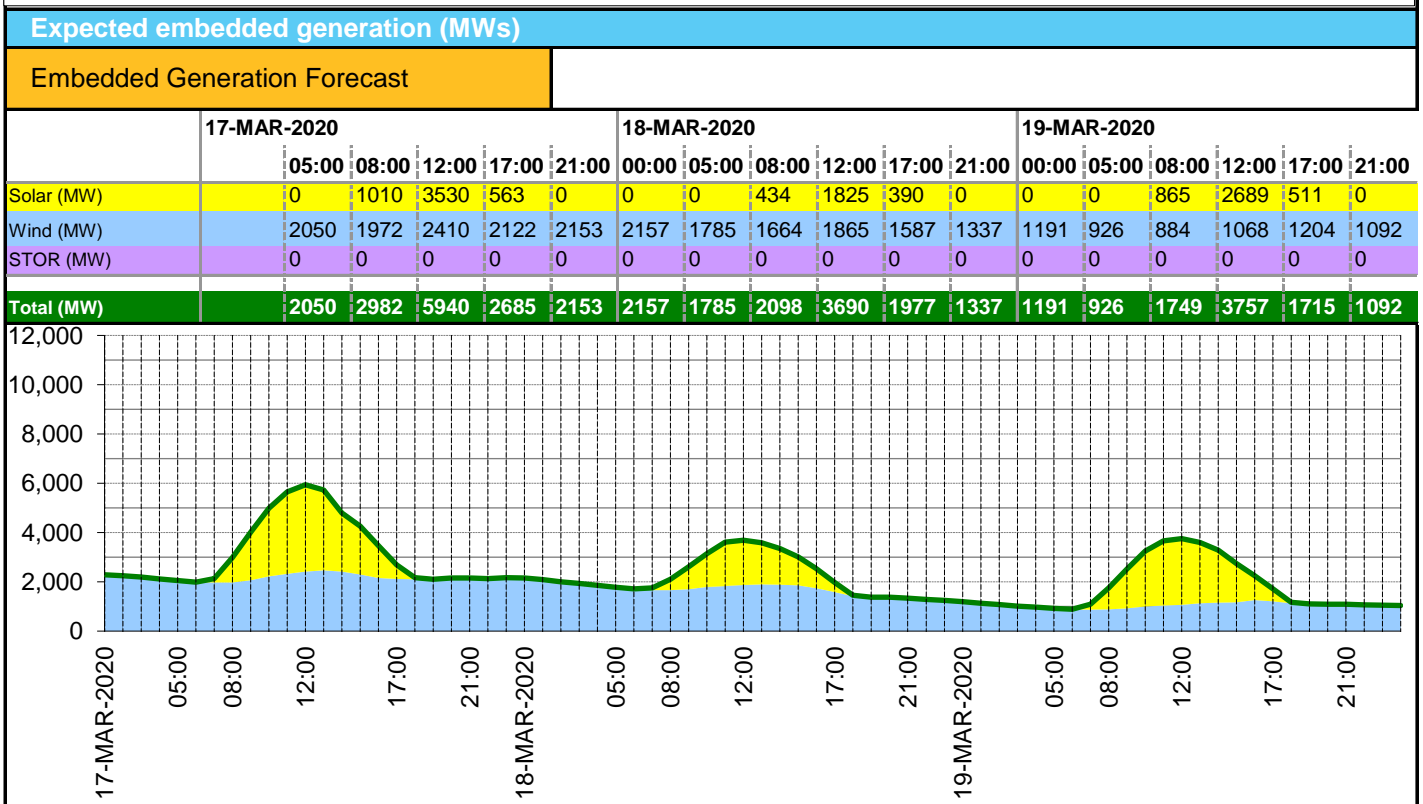
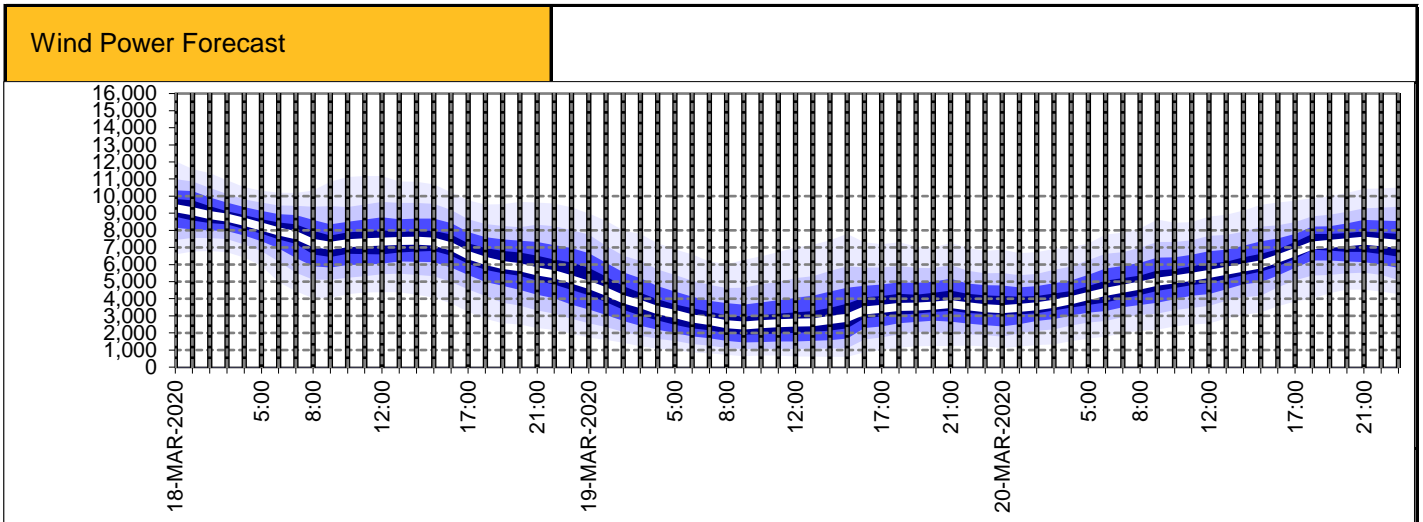
Today's High Level Risk Status Forecast for the next 24h			
General Status		Voltage	
Demand		System Inertia	
System Margins		Weather	
Generation		Transmission	
Active Constraints			

<a href="#">Today's Minimum De-Rated Margin</a>	7421.78 (SP 38)	
<a href="#">System Warnings</a>	None	
Current BMU Largest Loss Risk	Generation	1260 MW
	Demand	560 MW



Yesterday's Market Summary	
<a href="#">Cash out price (Max)</a>	£49.50/MWh (SP34)
<a href="#">Cash Out Price (Min)</a>	-£1.95 /MWh (SP 15, 25, 26)
<a href="#">Peak Demand Yesterday</a>	39,719 MW

Interconnectors Net Transfer Capacity (MWs)			
Today	Import	Export	
Netherlands (BritNed)	1100	1133	Fully available
France (IFA)	2000	2000	Fully available.
Belgium (Nemo)	1013	1013	Fully Available
Ireland (EWIC)	0	0	Outage
Northern Ireland (MOYLE)	395	500	Partially available.



Weather	Source	Commentary
Latest forecast (Summary)	<a href="#">Met Office</a> <a href="#">SEPA</a> <a href="#">Natural Resources Wales</a>	<p><b>Today:</b> Early cloud and rain over parts of northern England, Wales and the Midlands gradually sinks southwards, not quite reaching the far south of England where mild. Colder, brighter conditions with showers follow, showers mainly Scotland. Windy in the far north.</p> <p><b>Tonight:</b> Evening cloud and rain over parts of Wales and eastern, central and southern England sinks southwards into southern UK. Otherwise, cold with clear spells, widespread frost and showers, mainly Scotland.</p>
General Weather Concerns e.g. wind, rain, snow, flooding, GB Weather Warnings	<a href="#">Met Office Weather Warnings</a> <a href="#">SEPA</a> <a href="#">Natural Resources Wales</a>	<p><b>UK Weather Warnings</b> None</p> <p><b>UK Flood Warnings:</b> 6 Flood Warnings issued in England</p>

*Contains public sector information licensed under the Open Government Licence v1.0*

Further Information	
BM Reports	<a href="https://www.bmreports.com">https://www.bmreports.com</a>
System Balancing Reports	<a href="https://www.nationalgrideso.com/balancing-data/system-balancing-reports">https://www.nationalgrideso.com/balancing-data/system-balancing-reports</a>
Forecast Volumes and Costs	<a href="https://www.nationalgrideso.com/balancing-data/forecast-volumes-and-costs">https://www.nationalgrideso.com/balancing-data/forecast-volumes-and-costs</a>
NGESO Insights	<a href="https://www.nationalgrideso.com/insights">https://www.nationalgrideso.com/insights</a>