

**National Electricity
Transmission System Status Report**

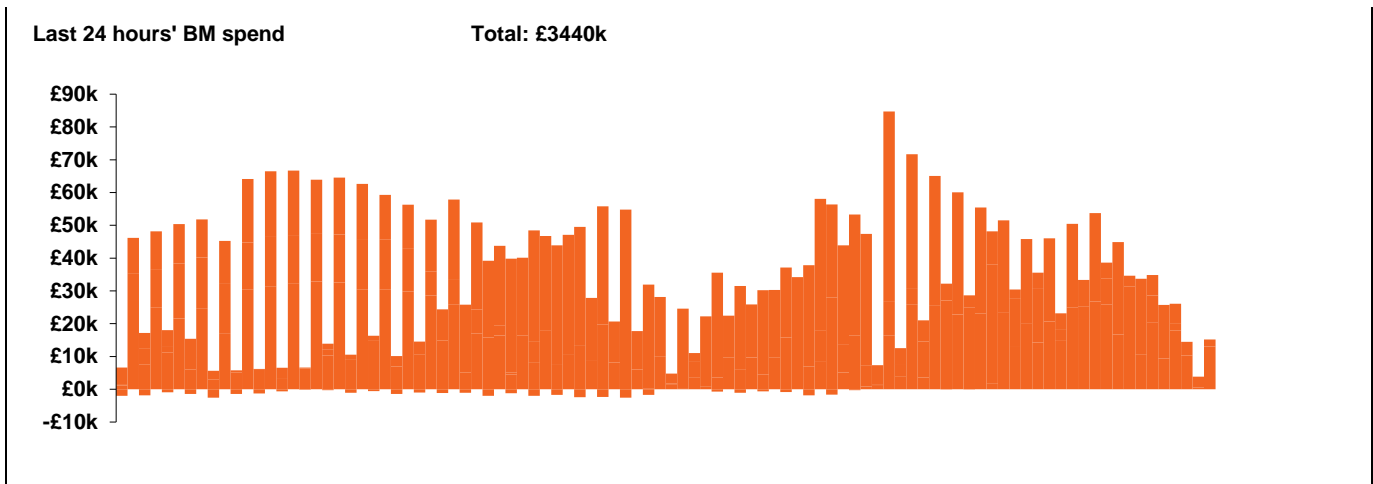


national**grid**ESO

National Electricity Transmission System Status Report
Monday 02 March 2020

Today's High Level Risk Status Forecast for the next 24h			
General Status		Voltage	
Demand		System Inertia	
System Margins		Weather	
Generation		Transmission	
Active Constraints			

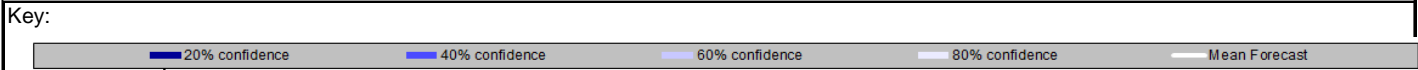
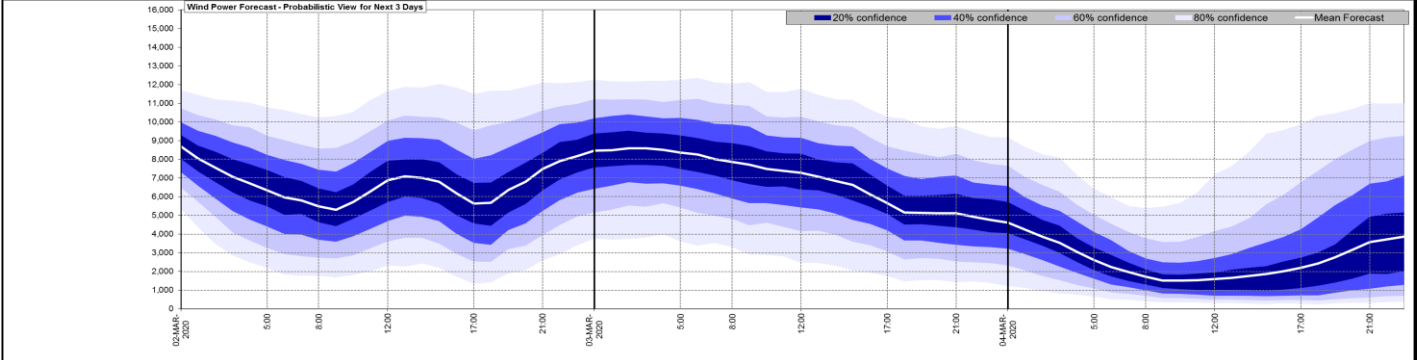
Today's Minimum De-Rated Margin	1948 (SP 38)	
System Warnings	None	
Current BMU Largest Loss Risk	Generation	1260 MW
	Demand	560 MW



Yesterday's Market Summary	
Cash out price (Max)	£49.00/MWh (SP37, SP38)
Cash Out Price (Min)	£0/MWh (SP31)
Peak Demand Yesterday	37162 MW

Interconnectors Net Transfer Capacity (MWs)			
Today	Import	Export	
Netherlands (BritNed)	1100	1133	Fully available
France (IFA)	2000	2000	Fully available.
Belgium (Nemo)	1013	1013	Fully Available
Ireland (EWIC)	500	530	Fully Available
Northern Ireland (MOYLE)	500	500	Fully available.

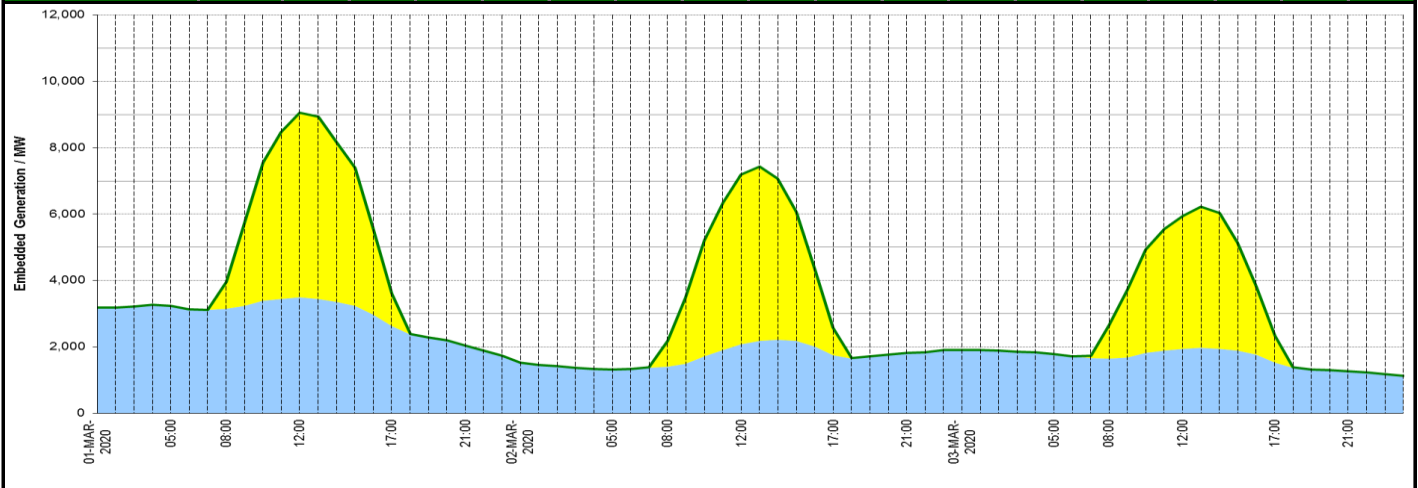
Wind Power Forecast



Expected embedded generation (MWs)

Embedded Generation Forecast

	01-MAR 0					02-MA 0					03-MA 0							
	0	05:00	08:00	12:00	17:00	21:00	00:00	05:00	08:00	12:00	17:00	21:00	00:00	05:00	08:00	12:00	17:00	21:00
Solar (MW)	0	0	812	5560	988	1	0	0	772	5110	822	0	0	0	994	4011	802	0
Wind (MW)	0	3230	3147	3489	2629	2041	1522	1327	1407	2080	1759	1811	1901	1777	1649	1944	1531	1269
STOR (MW)	0	0	0	0	0	0	0	0	0	0	0	0	0	0	0	0	0	0
Total (MW)	0	3230	3959	9049	3617	2042	1522	1327	2179	7190	2581	1811	1901	1777	2643	5955	2333	1269



Weather	Source	Commentary
Latest forecast (Summary)	Met Office SEPA Natural Resources Wales	<p>Today: Early cloud and wet weather over southern and southeastern England and East Anglia soon clearing. Otherwise chilly and breezy with sunny spells and showers, heaviest and most frequent showers in the north and west</p> <p>Tonight: Further showers for many northern and western parts of the UK, showers heavy at times and wintry over some hills. Drier over eastern and southern England. Risk of icy patches</p>
General Weather Concerns e.g. wind, rain, snow, flooding, GB Weather Warnings	Met Office Weather Warnings SEPA Natural Resources Wales	<p>UK Weather Warnings Started at: 00:00 GMT on Mon 2 March Ends: 10:00 GMT on Mon 2 March Icy stretches likely to form Monday morning perhaps bringing some disruption.</p> <ul style="list-style-type: none"> - Some injuries from slips and falls on icy surfaces - Probably some icy patches on some untreated roads, pavements and <p>UK Flood Warnings:</p>

Contains p Storm Jorge is forecast to continue to track across the north and west of the country until 15:00 h today bringing strong winds . The Killingh

Further Information	
BM Reports	https://www.bmreports.com
System Balancing Reports	https://www.nationalgrideso.com/balancing-data/system-balancing-reports
Forecast Volumes and Costs	https://www.nationalgrideso.com/balancing-data/forecast-volumes-and-costs
NGESO Insights	https://www.nationalgrideso.com/insights