

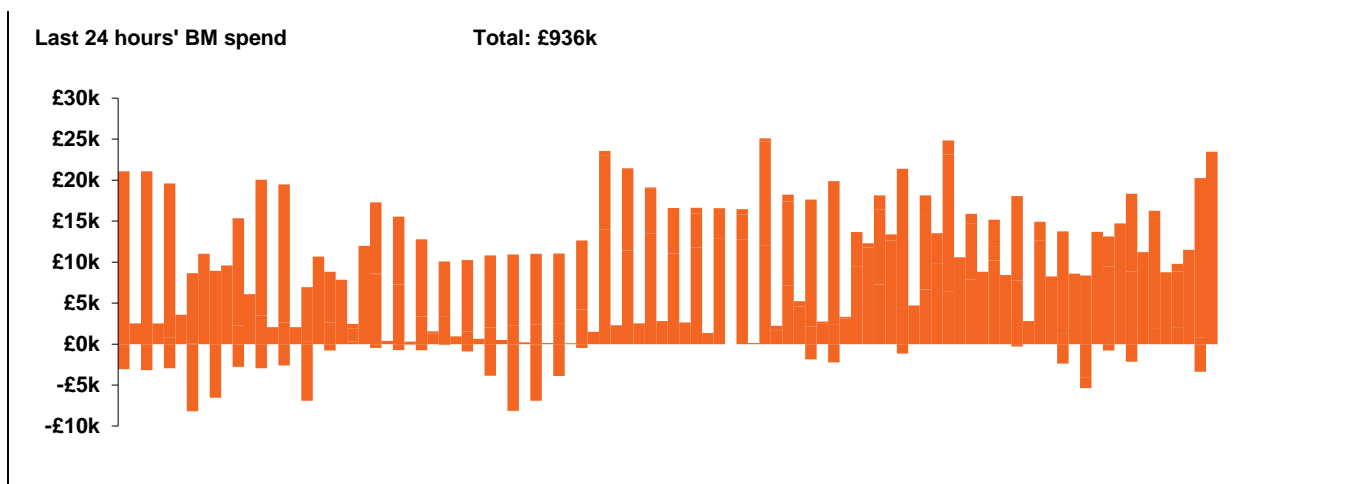
**National Electricity  
Transmission System Status Report**



**National Electricity Transmission System Status Report**  
Saturday 29 February 2020

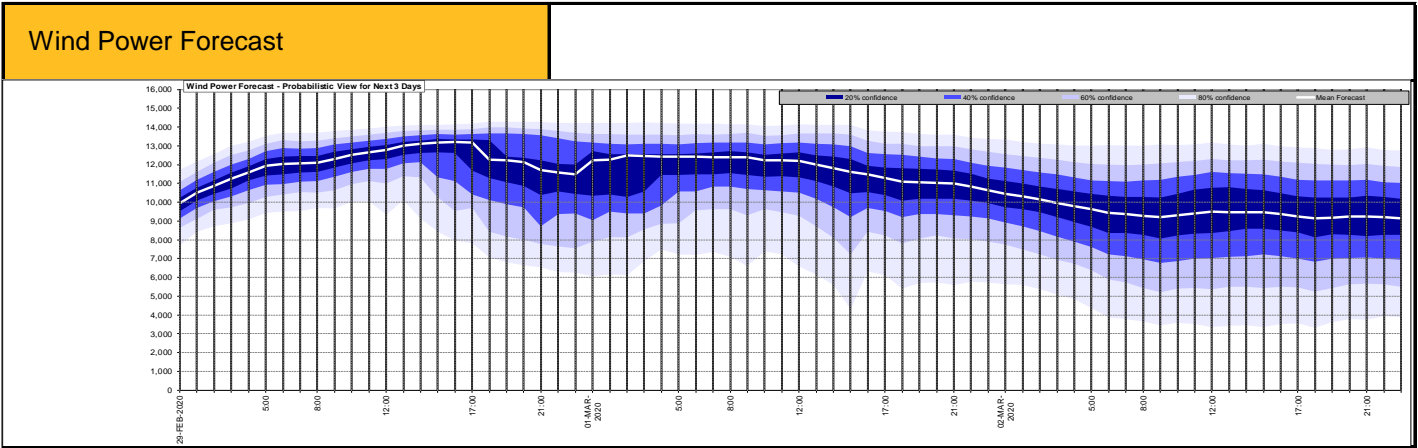
Today's High Level Risk Status Forecast for the next 24h			
General Status	Green	Voltage	Green
Demand	Green	System Inertia	Green
System Margins	Green	Weather	Yellow
Generation	Green	Transmission	Green
Active Constraints	Green		

<a href="#">Today's Minimum De-Rated Margin</a>	14396 (SP 37)	
<a href="#">System Warnings</a>	None	
Current BMU Largest Loss Risk	Generation	1260 MW
	Demand	560 MW



Yesterday's Market Summary	
<a href="#">Cash out price (Max)</a>	£45.75/MWh (SP29, SP36, SP37, SP38)
<a href="#">Cash Out Price (Min)</a>	£2.20/MWh (SP12)
<a href="#">Peak Demand Yesterday</a>	42250 MW

Interconnectors Net Transfer Capacity (MWs)			
Today	Import	Export	
Netherlands (BritNed)	1100	1133	Fully available
France (IFA)	2000	2000	Fully available.
Belgium (Nemo)	1013	1013	Fully Available
Ireland (EWIC)	500	530	Fully Available
Northern Ireland (MOYLE)	500	500	Fully available.



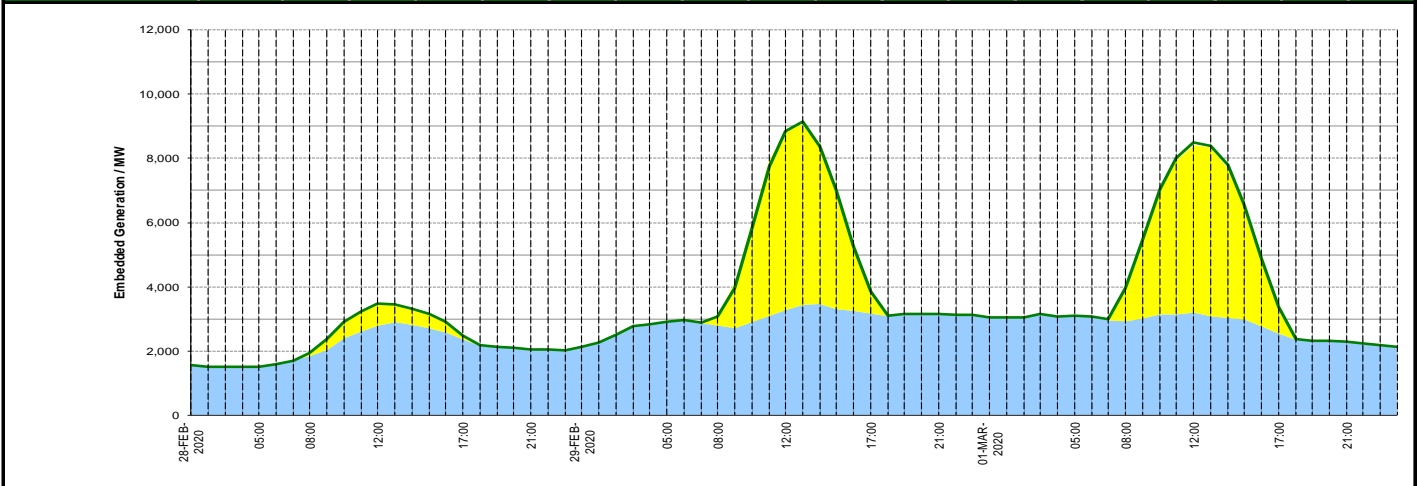
Key:

- 20% confidence
- 40% confidence
- 60% confidence
- 80% confidence
- Mean Forecast

### Expected embedded generation (MWs)

#### Embedded Generation Forecast

	27-FEB-2020					28-FEB-2020					29-FEB-2020						
	05:00	08:00	12:00	17:00	21:00	00:00	05:00	08:00	12:00	17:00	21:00	00:00	05:00	08:00	12:00	17:00	21:00
Solar (MW)	0	135	4950	1170	1	0	0	47	474	33	0	0	0	282	5208	628	0
Wind (MW)	1160	1461	2717	2324	1860	1597	1528	1819	2582	2353	2093	2082	2802	2735	3270	3169	3063
STOR (MW)	0	0	0	0	0	0	0	0	0	0	0	0	0	0	0	0	0
<b>Total (MW)</b>	<b>1160</b>	<b>1596</b>	<b>7667</b>	<b>3494</b>	<b>1861</b>	<b>1597</b>	<b>1528</b>	<b>1866</b>	<b>3056</b>	<b>2386</b>	<b>2093</b>	<b>2082</b>	<b>2802</b>	<b>3017</b>	<b>8478</b>	<b>3797</b>	<b>3063</b>



Weather	Source	Commentary
Latest forecast (Summary)	<a href="#">Met Office</a> <a href="#">SEPA</a> <a href="#">Natural Resources Wales</a>	<p><b>Today:</b> Heavy rain clearing eastern parts, then a mixture of sunshine and wintry showers. A spell of more persistent rain, with snow on hills, affecting Northern Ireland, northern England and parts of Scotland, accompanied by gales or severe gales. Feeling cold.</p> <p><b>Tonight:</b> Further rain, hill snow and severe gales affecting some central and northern parts. Clear spells and wintry showers in the south.</p>
General Weather Concerns e.g. wind, rain, snow, flooding, GB Weather Warnings	<a href="#">Met Office Weather Warnings</a> <a href="#">SEPA</a> <a href="#">Natural Resources Wales</a>	<p><b>UK Weather Warnings</b></p> <p><b>Yellow warning of rain</b> Areas affected: London &amp; South East England   South West England ACTIVE Started at: 03:00 GMT on Fri 28 February Ends: 06:00 GMT on Sat 29 February Heavy rain causing some flooding and transport disruption.</p> <p><b>Yellow warning of rain</b> Areas affected: Wales ACTIVE Started at: 06:00 GMT on Fri 28 February Ends: 06:00 GMT on Sat 29 February Heavy rain over south Wales on Friday and overnight into Saturday may lead to further disruption for recently flood hit communities.</p> <p><b>Yellow warning of rain</b> Areas affected: East Midlands   North West England   Yorkshire &amp; Humber ACTIVE Started at: 12:00 GMT on Fri 28 February Ends: 09:00 GMT on Sat 29 February Heavy rain may lead to some flooding and disruption to transport.</p> <p><b>Yellow warning of ice</b> Areas affected: Northern Ireland ACTIVE Started at: 05:00 GMT on Sat 29 February Ends: 09:30 GMT on Sat 29 February Following clearance of heavy rain, a sudden drop in temperatures will make icy conditions quite likely</p> <p><b>Yellow warning of wind</b> Areas affected: East Midlands   East of England   London &amp; South East England   North East England   North West England   Northern Ireland   SW Scotland, Lothian Borders   South West England   Strathclyde   Wales   West Midlands   Yorkshire &amp; Humber Starts: 12:00 GMT on Sat 29 February Ends: 12:00 GMT on Sun 1 March A spell of strong winds is expected to move northeast across a large swathe of the UK through Saturday afternoon and Sunday morning.</p> <p><b>UK Flood Warnings:</b> 269 Flood Warnings in England 5 Flood Warnings in Scotland 55 Flood Warnings in Wales</p>

Contains public sector information licensed under the Open Government Licence v1.0

Further Information	
BM Reports	<a href="https://www.bmreports.com">https://www.bmreports.com</a>
System Balancing Reports	<a href="https://www.nationalgrideso.com/balancing-data/system-balancing-reports">https://www.nationalgrideso.com/balancing-data/system-balancing-reports</a>
Forecast Volumes and Costs	<a href="https://www.nationalgrideso.com/balancing-data/forecast-volumes-and-costs">https://www.nationalgrideso.com/balancing-data/forecast-volumes-and-costs</a>
NGESO Insights	<a href="https://www.nationalgrideso.com/insights">https://www.nationalgrideso.com/insights</a>