

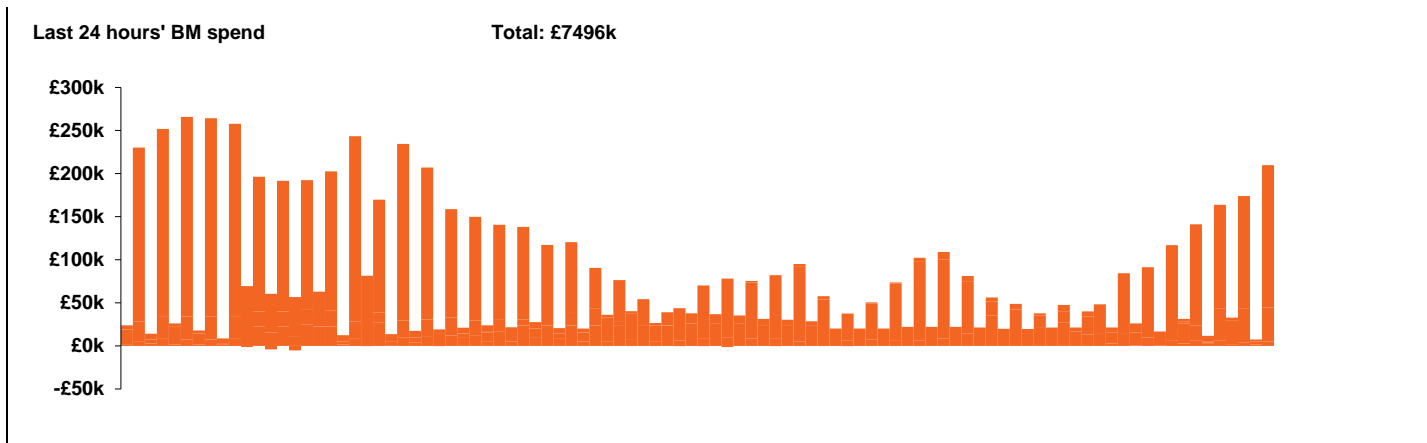
**National Electricity
Transmission System Status Report**



national**grid**ESO

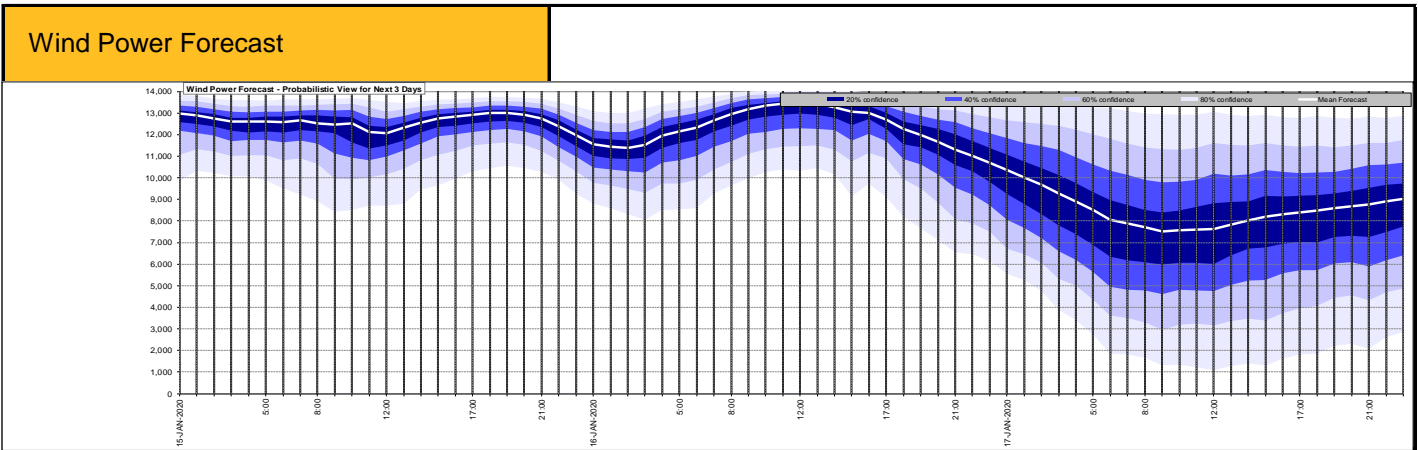
| Today's High Level Risk Status Forecast for the next 24h | | | |
|--|--|----------------|--|
| General Status | | Voltage | |
| Demand | | System Inertia | |
| System Margins | | Weather | |
| Generation | | Transmission | |
| Active Constraints | | | |

| | | | |
|---|--------------|--|--------|
| Today's Minimum De-Rated Margin | 9488 (SP 35) | | |
| System Warnings | None | | |
| Current BMU Largest Loss Risk | Generation | | 1260MW |
| | Demand | | 560MW |



| Yesterday's Market Summary | |
|---------------------------------------|----------------------------------|
| Cash out price (Max) | £59.75/MWh (SP33, SP34 and SP35) |
| Cash Out Price (Min) | £2.50/MWh (SP11) |
| Peak Demand Yesterday | 43,864MW |

| Interconnectors Net Transfer Capacity (MWs) | | | |
|--|--------|--------|----------------------|
| Today | Import | Export | |
| Netherlands (BritNed) | 1100 | 1133 | Fully available |
| France (IFA) | 2000 | 2000 | Fully available. |
| Belgium (Nemo) | 1013 | 1013 | Fully Available |
| Ireland (EWIC) | 500 | 530 | Fully Available |
| Northern Ireland (MOYLE) | 395 | 500 | Partially available. |



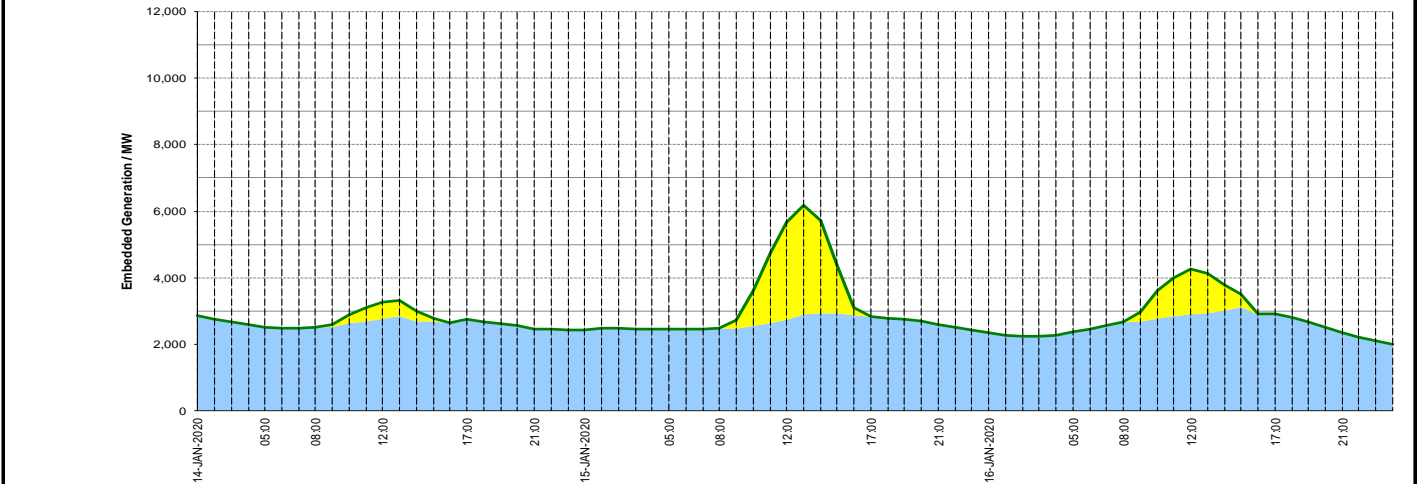
Key:

- 20% confidence
- 40% confidence
- 60% confidence
- 80% confidence
- Mean Forecast

Expected embedded generation (MWs)

Embedded Generation Forecast

| | 14-JAN-2020 | | | | | 15-JAN-2020 | | | | | 16-JAN-2020 | | | | | | |
|-------------------|-------------|-------------|-------------|-------------|-------------|-------------|-------------|-------------|-------------|-------------|-------------|-------------|-------------|-------------|-------------|-------------|-------------|
| | 05:00 | 08:00 | 12:00 | 17:00 | 21:00 | 00:00 | 05:00 | 08:00 | 12:00 | 17:00 | 21:00 | 00:00 | 05:00 | 08:00 | 12:00 | 17:00 | 21:00 |
| Solar (MW) | 0 | 0 | 486 | 0 | 0 | 0 | 0 | 0 | 2914 | 0 | 0 | 0 | 0 | 0 | 1355 | 0 | 0 |
| Wind (MW) | 2513 | 2497 | 2775 | 2747 | 2458 | 2431 | 2454 | 2469 | 2742 | 2825 | 2578 | 2336 | 2360 | 2665 | 2909 | 2912 | 2338 |
| STOR (MW) | 0 | 0 | 0 | 0 | 0 | 0 | 0 | 0 | 0 | 0 | 0 | 0 | 0 | 0 | 0 | 0 | 0 |
| Total (MW) | 2513 | 2497 | 3261 | 2747 | 2458 | 2431 | 2454 | 2469 | 5656 | 2825 | 2578 | 2336 | 2360 | 2665 | 4264 | 2912 | 2338 |



| Weather | Source | Commentary |
|--|--|--|
| Latest forecast (Summary) | Met Office SEPA Natural Resources Wales | <p>Today: Rain clearing the southeast with winds easing. Elsewhere, bright or sunny spells with showers in the west. These heavy at times in west Scotland with strong winds and a risk of hail and thunder.</p> <p>Tonight: Turning windier, especially in the west with outbreaks of rain spreading to Northern Ireland and western Scotland by around dawn.</p> |
| General Weather Concerns e.g. wind, rain, snow, flooding, GB Weather Warnings | Met Office Weather Warnings SEPA Natural Resources Wales | <p>Yellow warning of rain</p> <p>Areas affected: London & South East England ACTIVE Started at: 13:00 GMT on Tue 14 January Ends: 09:00 GMT on Wed 15 January Rain, heavy at times, may bring some disruption on Tuesday and Wednesday.</p> <p>Flood warnings 36 x Flood Warnings in England Flood Warnings in Scotland</p> <p style="text-align: right;">23 x</p> |

Contains public sector information licensed under the Open Government Licence v1.0

| Further Information | |
|----------------------------|---|
| BM Reports | https://www.bmreports.com |
| System Balancing Reports | https://www.nationalgrideso.com/balancing-data/system-balancing-reports |
| Forecast Volumes and Costs | https://www.nationalgrideso.com/balancing-data/forecast-volumes-and-costs |
| NGESO Insights | https://www.nationalgrideso.com/insights |