

**National Electricity
Transmission System Status Report**

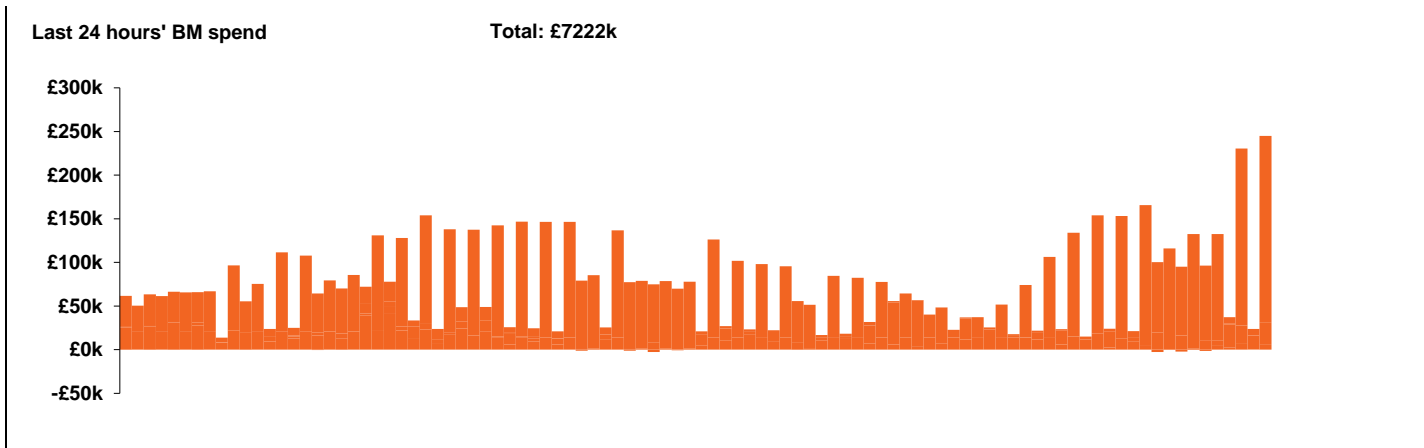


national**grid**ESO

National Electricity Transmission System Status Report
Tuesday 14 January 2020

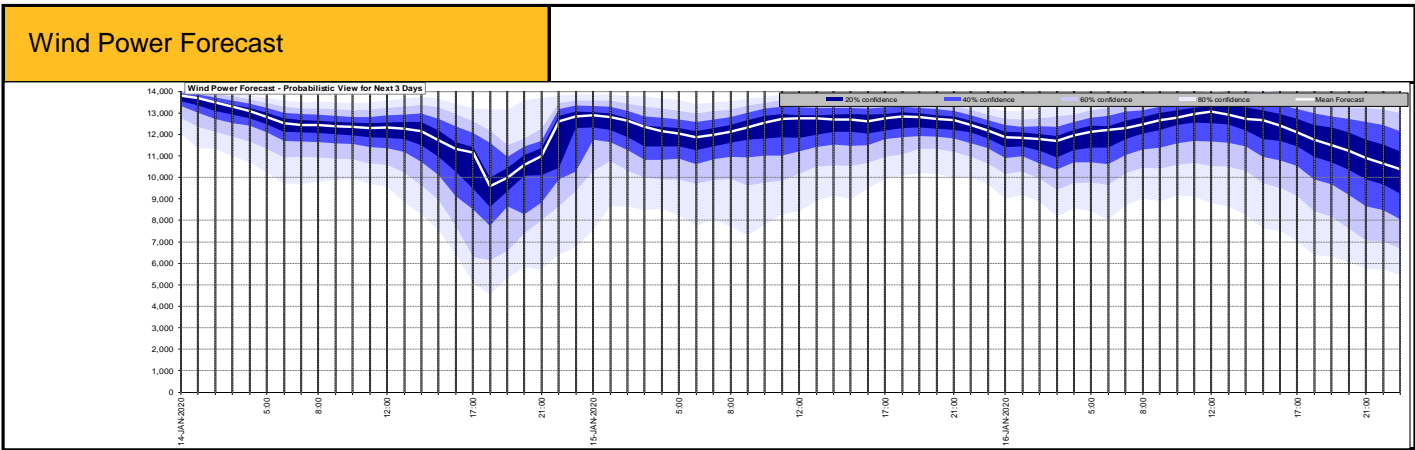
Today's High Level Risk Status Forecast for the next 24h			
General Status		Voltage	
Demand		System Inertia	
System Margins		Weather	
Generation		Transmission	
Active Constraints			

Today's Minimum De-Rated Margin	7601 (SP 35)		
System Warnings	None		
Current BMU Largest Loss Risk	Generation		1260MW
	Demand		560MW



Yesterday's Market Summary	
Cash out price (Max)	£56.50 /MWh (SP 17)
Cash Out Price (Min)	£0.50/MWh (SP 1 - 4, 6, 10)
Peak Demand Yesterday	45,266 MW

Interconnectors Net Transfer Capacity (MWs)			
Today	Import	Export	
Netherlands (BritNed)	1100	1133	Fully available
France (IFA)	2000	2000	Fully available.
Belgium (Nemo)	1013	1013	Fully Available
Ireland (EWIC)	500	530	Fully Available
Northern Ireland (MOYLE)	395	500	Partially available.

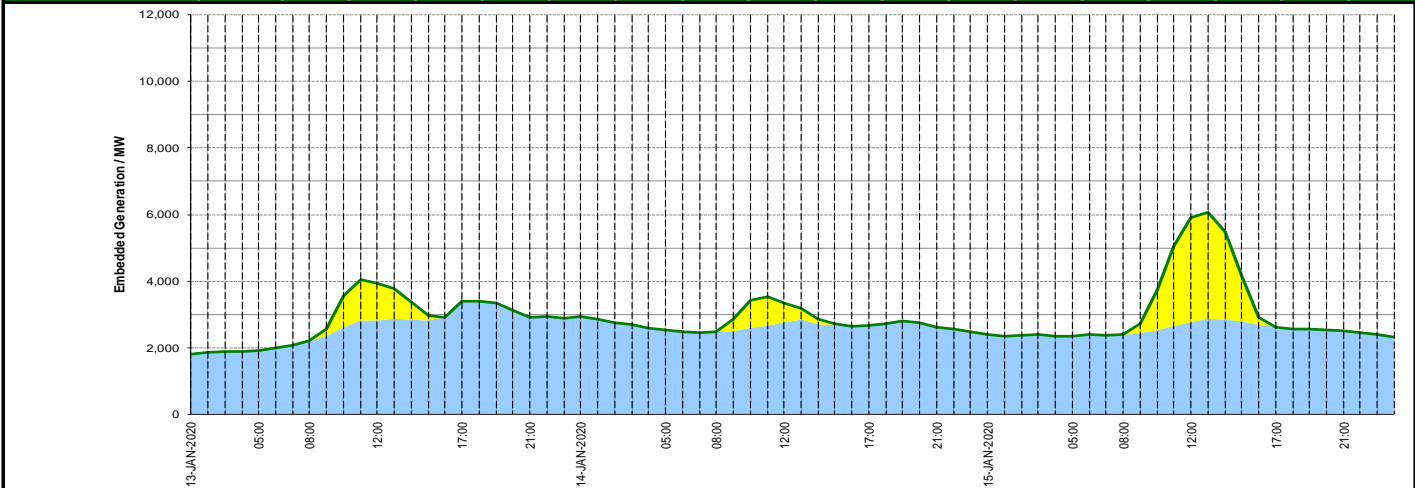


Key:

- 20% confidence
- 40% confidence
- 60% confidence
- 80% confidence
- Mean Forecast

Expected embedded generation (MWs)

Embedded Generation Forecast	13-JAN-2020					14-JAN-2020					15-JAN-2020						
	05:00	08:00	12:00	17:00	21:00	00:00	05:00	08:00	12:00	17:00	21:00	00:00	05:00	08:00	12:00	17:00	21:00
Solar (MW)	0	0	1100	0	0	0	0	0	583	0	0	0	0	0	3146	0	0
Wind (MW)	1920	2200	2824	3389	2900	2927	2529	2480	2763	2655	2624	2397	2355	2391	2763	2627	2518
STOR (MW)	0	0	0	0	0	0	0	0	0	0	0	0	0	0	0	0	0
Total (MW)	1920	2200	3924	3389	2900	2927	2529	2480	3346	2655	2624	2397	2355	2391	5909	2627	2518



Weather	Source	Commentary
Latest forecast (Summary)	Met Office SEPA Natural Resources Wales	<p>Today: Blustery showers in northwest Scotland with further gales. Elsewhere bright skies soon giving way to another batch of wet and very windy weather, especially across England and Wales. Mild here, cold in north.</p> <p>Tonight: Blustery showers and strong winds continuing in northwest Scotland and parts of Northern Ireland. Winds easing elsewhere with heavy rain becoming confined to southeast England.</p>
General Weather Concerns e.g. wind, rain, snow, flooding, GB Weather Warnings	Met Office Weather Warnings SEPA Natural Resources Wales	<p>Yellow warning of wind Areas affected: Highlands & Eilean Siar Strathclyde ACTIVE Started at: 00:00 GMT on Tue 14 January Ends: 23:59 GMT on Tue 14 January Very strong southwesterly winds will continue through Tuesday and may cause further disruption.</p> <p>Yellow Warning of Snow Areas affected: Central, Tayside & Fife Grampian Highlands & Eilean Siar Strathclyde ACTIVE Started at: 01:00 GMT on Tue 14 January Ends: 13:00 GMT on Tue 14 January Icy patches and wintry showers may lead to some travel disruption.</p> <p>Yellow warning of ice Areas affected: Central, Tayside & Fife Grampian Highlands & Eilean Siar Strathclyde ACTIVE Started at: 01:00 GMT on Tue 14 January Ends: 13:00 GMT on Tue 14 January Icy patches and wintry showers may lead to some travel disruption.</p> <p>Yellow warning of wind Areas affected: East Midlands East of England London & South East England North East England North West England South West England Wales West Midlands Yorkshire & Humber Starts: 12:00 GMT on Tue 14 January Ends: 23:59 GMT on Tue 14 January Strong winds will develop on Tuesday which may bring some disruption.</p> <p>Yellow warning of rain Areas affected: London & South East England Starts: 13:00 GMT on Tue 14 January Ends: 09:00 GMT on Wed 15 January Rain, heavy at times, may bring some disruption on Tuesday and Wednesday.</p> <p>Flood warnings 8 x Flood Warnings in England - 31 x Flood Warnings in Scotland</p>

Contains public sector information licensed under the Open Government Licence v1.0

Further Information	
BM Reports	https://www.bmreports.com
System Balancing Reports	https://www.nationalgrideso.com/balancing-data/system-balancing-reports
Forecast Volumes and Costs	https://www.nationalgrideso.com/balancing-data/forecast-volumes-and-costs
NGESO Insights	https://www.nationalgrideso.com/insights