

**National Electricity
Transmission System Status Report**



national**grid**ESO

National Electricity Transmission System Status Report
Tuesday 24 December 2019

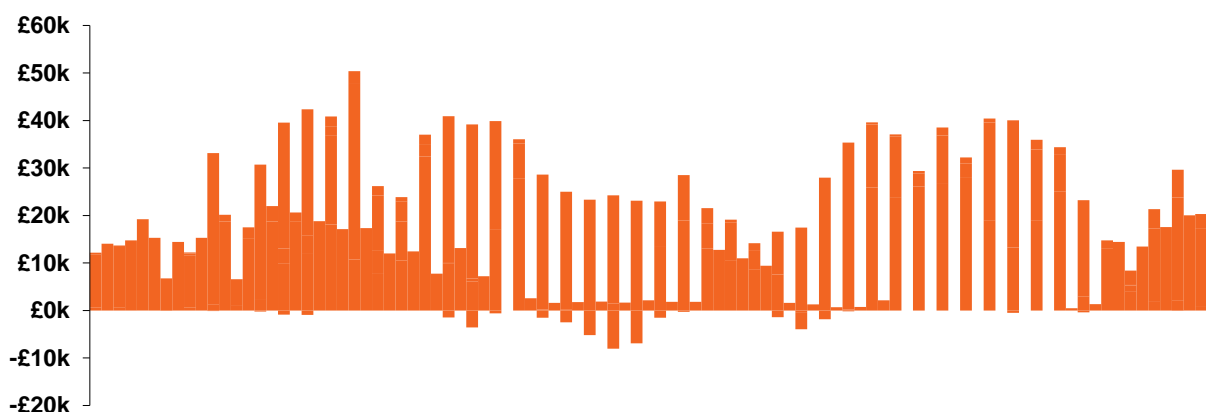
Today's High Level Risk Status Forecast for the next 24h			
General Status		Voltage	
Demand		System Inertia	
System Margins		Weather	
Generation		Transmission	
Active Constraints			

<u>Today's Minimum De-Rated Margin</u>	5650.41 MW (SP 35)	
<u>System Warnings</u>	None	
Current BMU Largest Loss Risk	Generation	1260MW
	Demand	560MW

Balancing Costs

Last 24 hours' BM spend

Total: £1687k

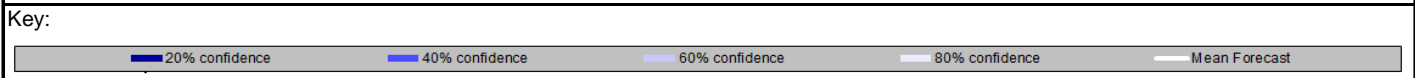
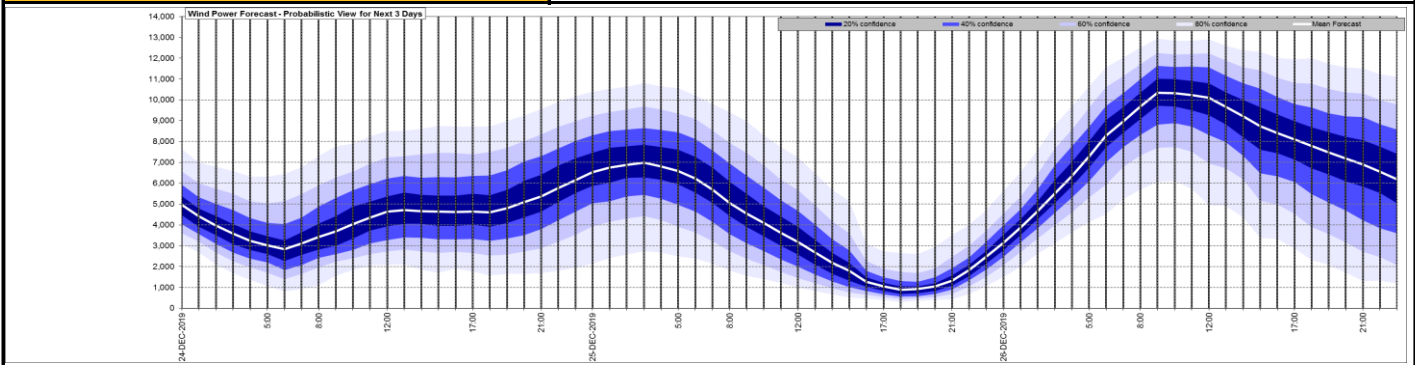


Yesterday's Market Summary

<u>Cash out price (Max)</u>	£59.85/MWh (SP 39, 40)
<u>Cash Out Price (Min)</u>	£2.50/MWh (SP 6, 8, 9, 10)
<u>Peak Demand Yesterday</u>	40,790 MW

Interconnectors Net Transfer Capacity (MWs)			
Today	Import	Export	
Netherlands (BritNed)	1100	1133	Fully available
France (IFA)	2000	2000	Fully Available
Belgium (Nemo)	1013	1013	Fully Available
Ireland (EWIC)	500	530	Fully Available
Northern Ireland (MOYLE)	395	500	Partially available.

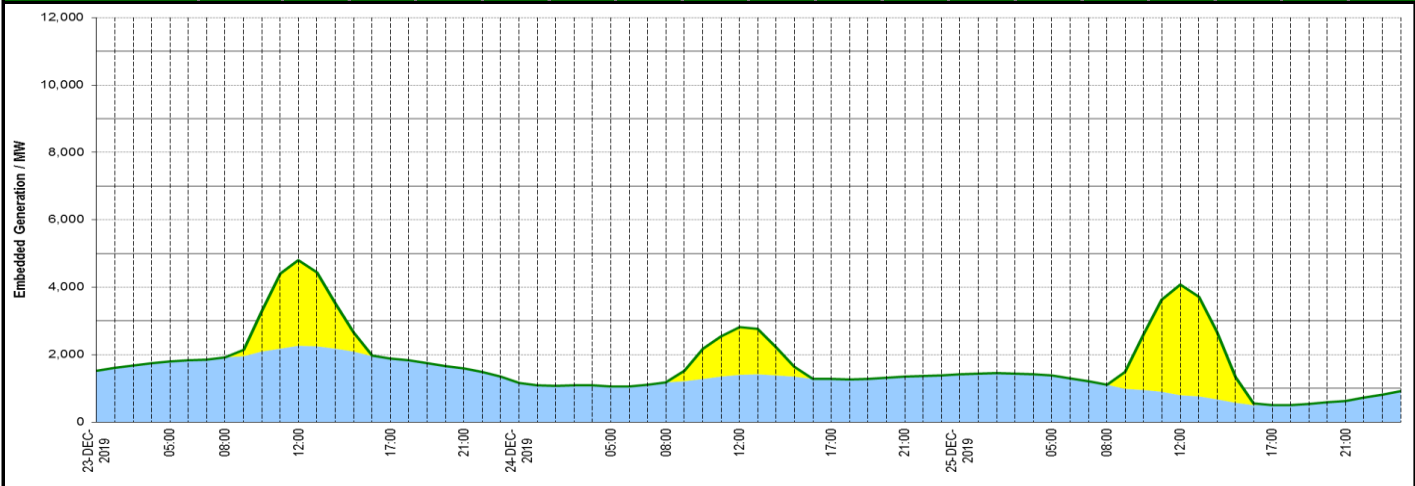
Wind Power Forecast



Expected embedded generation (MWs)

Embedded Generation Forecast

	23-DEC-2019					24-DEC-2019					25-DEC-2019						
	05:00	08:00	12:00	17:00	21:00	00:00	05:00	08:00	12:00	17:00	21:00	00:00	05:00	08:00	12:00	17:00	21:00
Solar (MW)	0	0	2540	1	2	0	0	0	1401	0	0	0	0	0	3280	0	0
Wind (MW)	1792	1911	2260	1879	1590	1156	1051	1169	1408	1281	1341	1419	1377	1101	796	495	629
STOR (MW)	0	0	0	0	0	0	0	0	0	0	0	0	0	0	0	0	0
Total (MW)	1792	1911	4800	1880	1592	1156	1051	1169	2809	1281	1341	1419	1377	1101	4076	495	629



Weather	Source	Commentary
Latest forecast (Summary)	Met Office SEPA Natural Resources Wales	<p>Today: Rain over Northern Ireland, southern Scotland and northern England easing then moving southwards. Ahead of this over Wales and southern England some heavy showers, with thunder and hail in the southwest strong, gusty winds. A few lighter showers further north.</p> <p>Tonight: Rain and showers clearing all but northern Scotland with winds easing for many, particularly the southwest. Chilly, particularly for the west, southwest and far northeast with frost and fog patches.</p>
General Weather Concerns e.g. wind, rain, snow, flooding, GB Weather Warnings	Met Office Weather Warnings SEPA Natural Resources Wales	<p>Weather warning Yellow warning of thunderstorms Areas affected: South West England Wales</p> <p>Flood Warnings England 190 Flood Warnings.</p>

Contains public sector information licensed under the Open Government Licence v1.0

Further Information	
BM Reports	https://www.bmreports.com
System Balancing Reports	https://www.nationalgrideso.com/balancing-data/system-balancing-reports
Forecast Volumes and Costs	https://www.nationalgrideso.com/balancing-data/forecast-volumes-and-costs
NGESO Insights	https://www.nationalgrideso.com/insights