

**National Electricity
Transmission System Status Report**

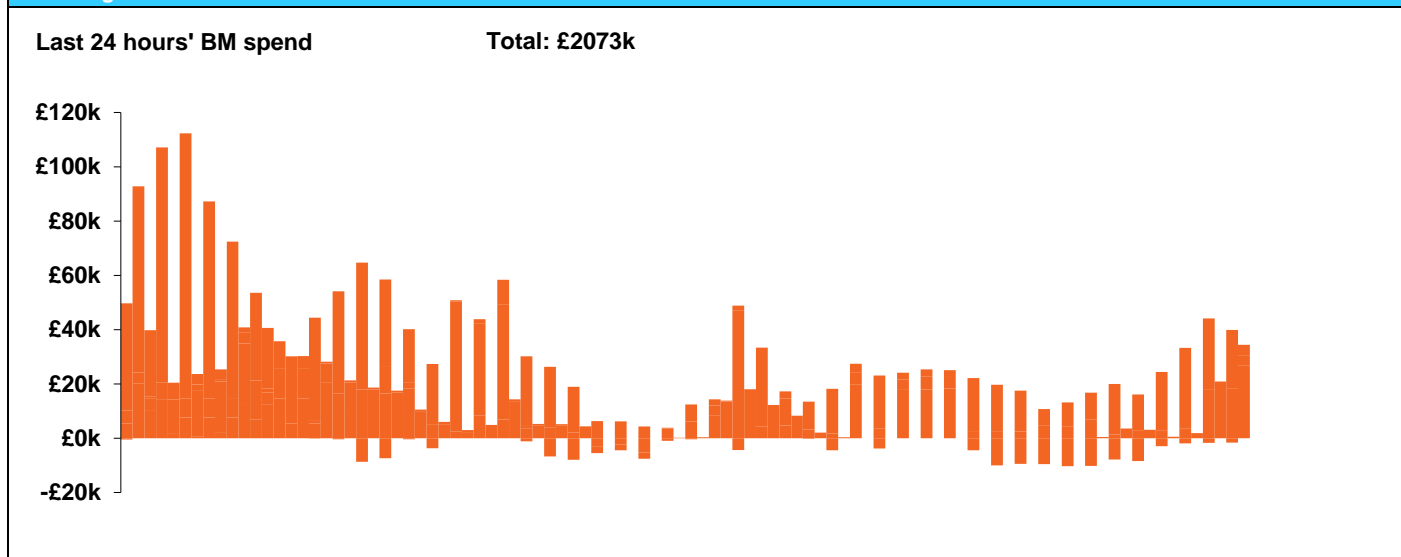


National Electricity Transmission System Status Report
Friday 20 December 2019

Today's High Level Risk Status Forecast for the next 24h			
General Status		Voltage	
Demand		System Inertia	
System Margins		Weather	
Generation		Transmission	
Active Constraints			

Today's Minimum De-Rated Margin	4548 MW (SP 35)	
System Warnings	None	
Current BMU Largest Loss Risk	Generation	1260MW
	Demand	560MW

Balancing Costs

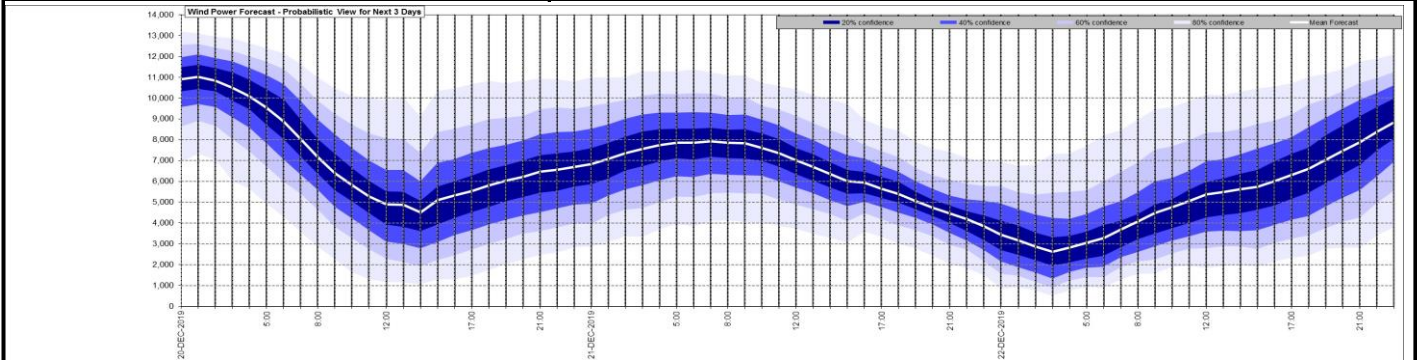


Yesterday's Market Summary

Cash out price (Max)	£63.00/MWh (SP 34-37)
Cash Out Price (Min)	£2.50/MWh (SP 10,20)
Peak Demand Yesterday	41,637 MW

Interconnectors Net Transfer Capacity (MWs)			
Today	Import	Export	
Netherlands (BritNed)	1100	1133	Fully available
France (IFA)	2000	2000	Fully Available
Belgium (Nemo)	1013	1013	Fully Available
Ireland (EWIC)	500	530	Fully Available
Northern Ireland (MOYLE)	395	500	Partially available.

Wind Power Forecast



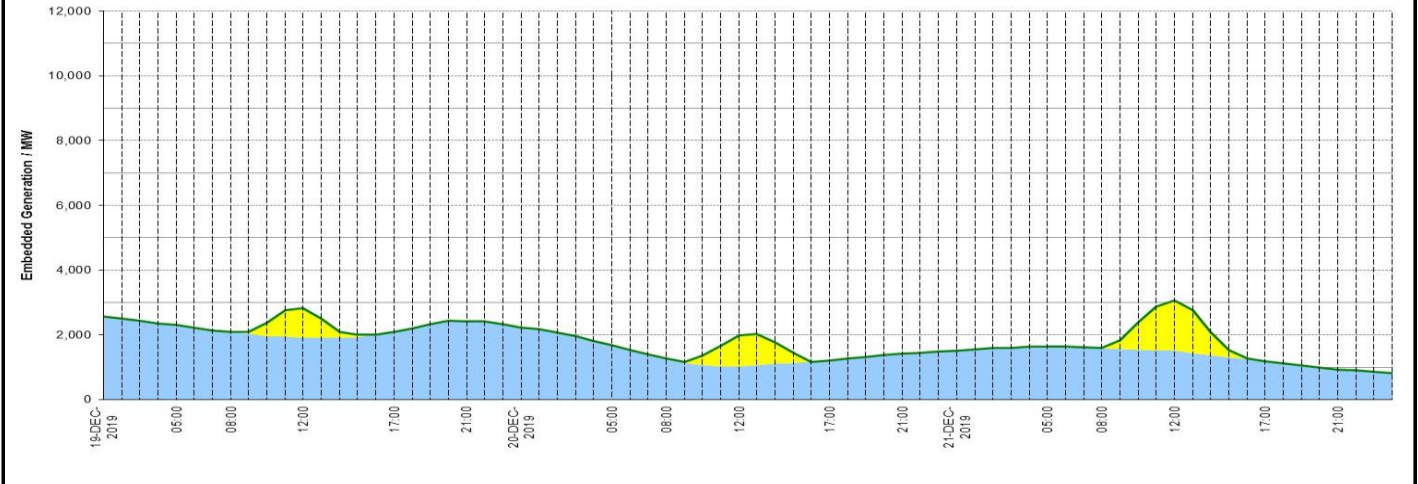
Key:

- 20% confidence
- 40% confidence
- 60% confidence
- 80% confidence
- Mean Forecast

Expected embedded generation (MWs)

Embedded Generation Forecast

	19-DEC-2019					20-DEC-2019					21-DEC-2019						
	05:00	08:00	12:00	17:00	21:00	00:00	05:00	08:00	12:00	17:00	21:00	00:00	05:00	08:00	12:00	17:00	21:00
Solar (MW)	0	0	912	0	0	0	0	0	944	0	0	0	0	0	1552	0	0
Wind (MW)	2303	2085	1909	2096	2415	2228	1681	1269	1032	1218	1423	1509	1638	1593	1514	1195	930
STOR (MW)	0	0	0	0	0	0	0	0	0	0	0	0	0	0	0	0	0
Total (MW)	2303	2085	2821	2096	2415	2228	1681	1269	1976	1218	1423	1509	1638	1593	3066	1195	930



Weather	Source	Commentary
Latest forecast (Summary)	Met Office SEPA Natural Resources Wales	<p>Today: Rain across eastern England, Northern Ireland and western Scotland will slowly clear followed by some bright or sunny spells for most. Southern and western Britain will see some sunshine and heavy showers, perhaps with a rumble of thunder.</p> <p>Tonight: Showers across central and southern Britain, and far north of Scotland. Northern Ireland and much of northern and eastern England are likely to stay dry with some fog patches later.</p>
General Weather Concerns e.g. wind, rain, snow, flooding, GB Weather Warnings	Met Office Weather Warnings SEPA Natural Resources Wales	<p>Weather warning Yellow warning of rain until 12:00hrs on Friday 20th December.</p> <p>Areas affected: East Midlands East of England London & South East England South West England Wales West Midland</p> <p>Yellow warning of rain until 09:00hrs on Friday 20th December</p> <p>Areas affected: Central, Tayside & Fife Grampian</p> <p>Flood Warnings England 37 Flood Warnings. Scotland 7 Flood Warnings. Wales 1 Flood Warning.</p>

Contains public sector information licensed under the Open Government Licence v1.0

Further Information	
BM Reports	https://www.bmreports.com
System Balancing Reports	https://www.nationalgrideso.com/balancing-data/system-balancing-reports
Forecast Volumes and Costs	https://www.nationalgrideso.com/balancing-data/forecast-volumes-and-costs
NGESO Insights	https://www.nationalgrideso.com/insights