

**National Electricity
Transmission System Status Report**



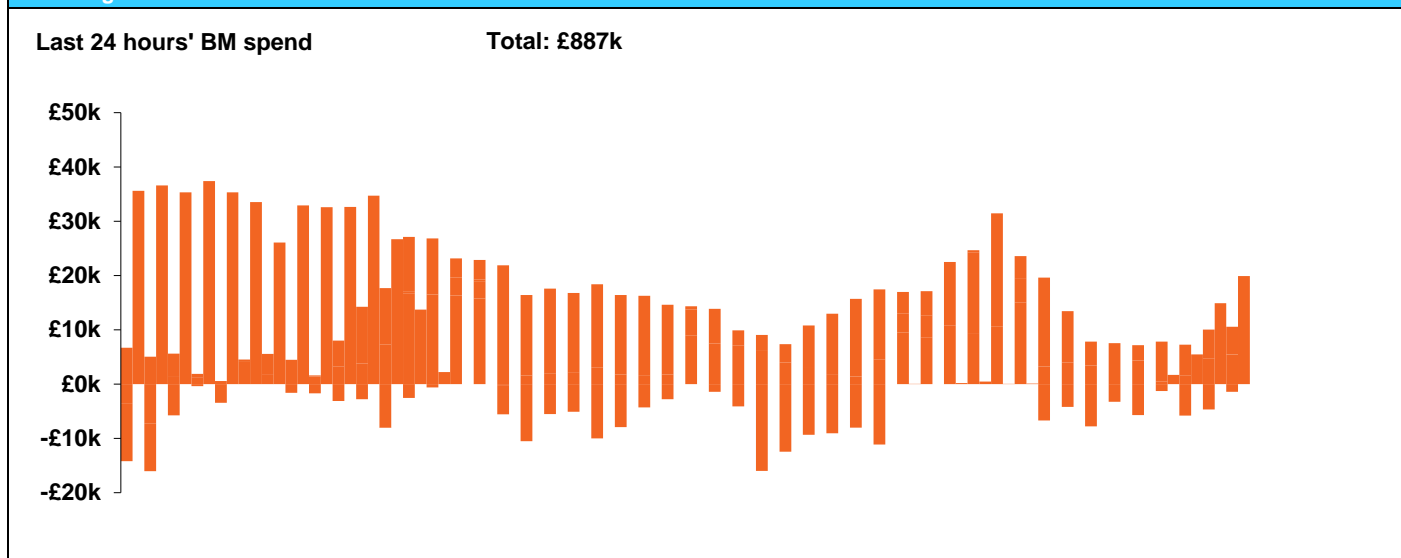
national**grid**ESO

National Electricity Transmission System Status Report
Wednesday 27 November 2019

Today's High Level Risk Status Forecast for the next 24h			
General Status		Voltage	
Demand		System Inertia	
System Margins		Weather	
Generation		Transmission	
Active Constraints			

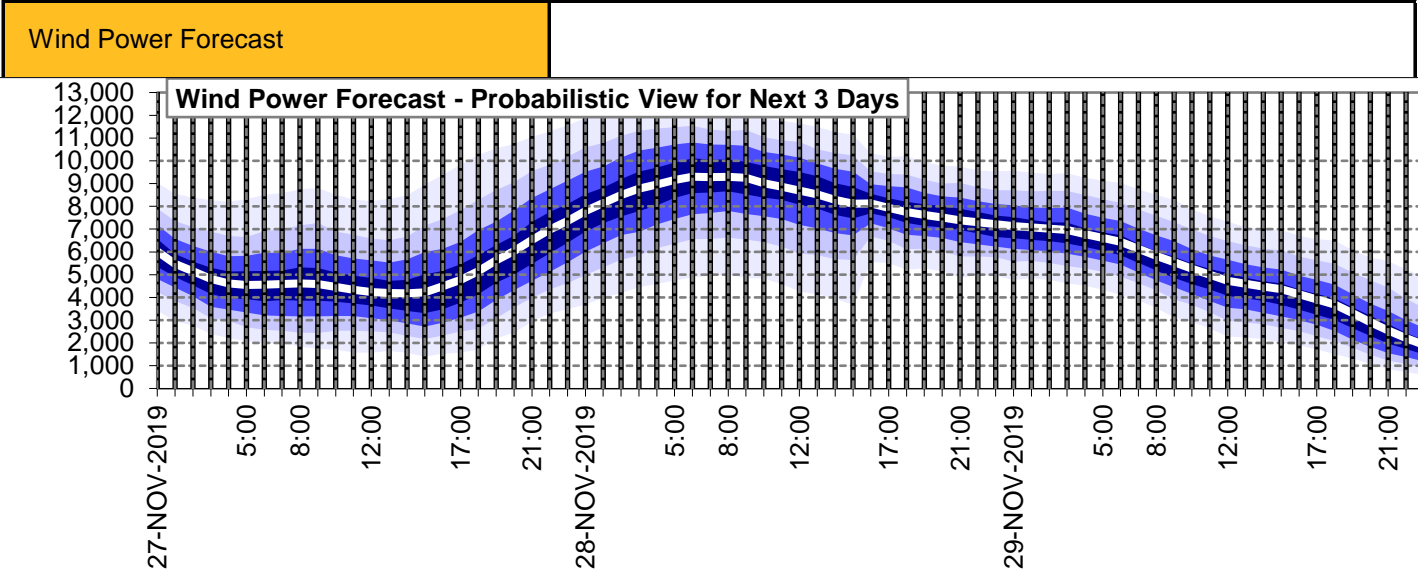
Today's Minimum De-Rated Margin	3398 MW (SP35)	
System Warnings	None	
Current BMU Largest Loss Risk	Generation	1260MW
	Demand	560MW

Balancing Costs



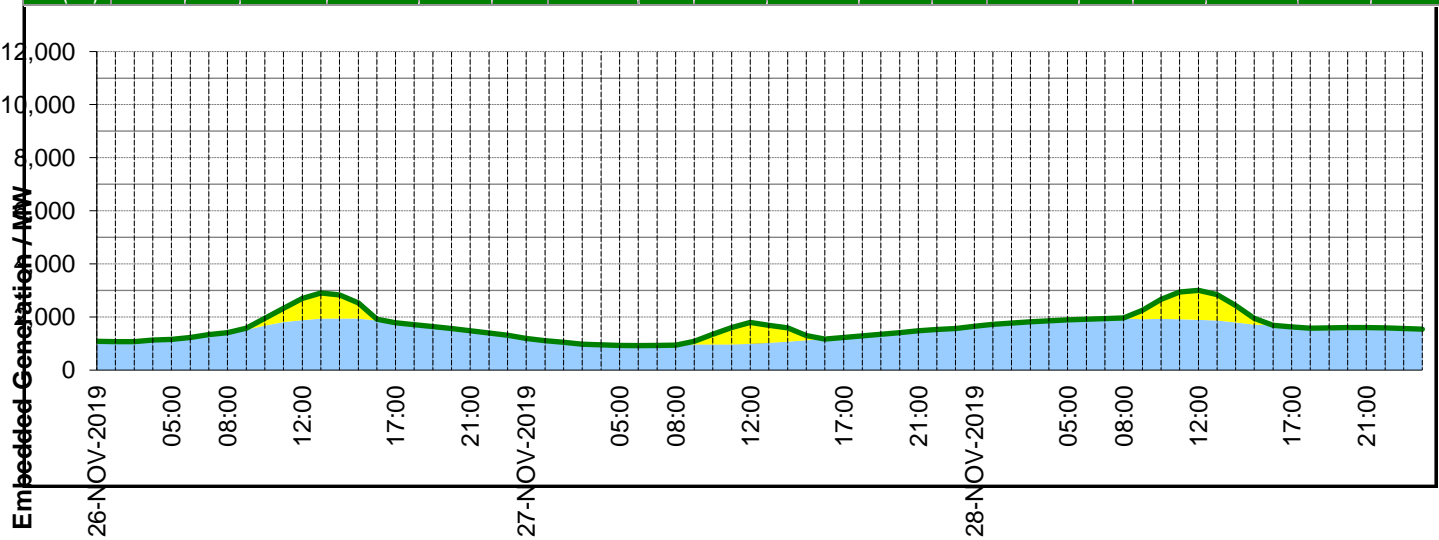
Yesterday's Market Summary	
Cash out price (Max)	£69.65 MWh (SP 36,37,38)
Cash Out Price (Min)	£5.25 MWh (SP 45)
Peak Demand Yesterday	44,016 MW

Interconnectors			
Net Transfer Capacity (MWs)			
Today	Import	Export	
Netherlands (BritNed)	1100	1133	Fully available
France (IFA)	2000	2000	Fully Available
Belgium (Nemo)	1013	1013	Fully Available
Ireland (EWIC)	500	530	Fully Available
Northern Ireland (MOYLE)	395	500	Partially available.



Embedded Generation Forecast

	26-NOV-2019					27-NOV-2019						28-NOV-2019					
	05:00	08:00	12:00	17:00	21:00	00:00	05:00	08:00	12:00	17:00	21:00	00:00	05:00	08:00	12:00	17:00	21:00
Solar (MW)	0	0	827	0	0	0	0	0	807	0	0	0	0	33	1108	0	0
Wind (MW)	1154	1408	1878	1787	1483	1192	933	939	988	1230	1478	1651	1893	1937	1896	1632	1607
STOR (MW)	0	0	0	0	0	0	0	0	0	0	0	0	0	0	0	0	0
Total (MW)	1154	1408	2705	1787	1483	1192	933	939	1795	1230	1478	1651	1893	1970	3004	1632	1607



Weather	Source	Commentary
Latest forecast (Summary)	Met Office SEPA Natural Resources Wales	<p>Today: Areas of rain or showers for many, the rain becoming more focused across parts of northern Scotland and eastern England but with scattered heavy showers elsewhere. Some sunnier breaks, mainly in western areas of the UK. A little less mild.</p> <p>Tonight: Rain in parts of east, northeast and central Britain, with a scattering of showers in coastal areas elsewhere. Windy in northern areas and turning colder there with patchy frost.</p>
General Weather Concerns e.g. wind, rain, snow, flooding, GB Weather Warnings	Met Office Weather Warnings SEPA Natural Resources Wales	<p>Weather Warnings:</p> <p>Yellow warning of rain</p> <p>Areas affected: London & South East England South West England Wales</p> <p>ACTIVE</p> <p>Started at: 06:00 GMT on Tue 26 November</p> <p>Ends: 12:00 GMT on Wed 27 November</p> <p>Yellow warning of rain</p> <p>Areas affected: North East England Yorkshire & Humber</p> <p>Starts: 09:00 GMT on Wed 27 November</p> <p>Ends: 06:00 GMT on Thu 28 November</p> <p>Flood Warnings:</p>

Contains public sector information licensed under the Open Government Licence v1.0

Further Information	
BM Reports	https://www.bmreports.com
System Balancing Reports	https://www.nationalgrideso.com/balancing-data/system-balancing-reports
Forecast Volumes and Costs	https://www.nationalgrideso.com/balancing-data/forecast-volumes-and-costs
NGESO Insights	https://www.nationalgrideso.com/insights