

**National Electricity  
Transmission System Status Report**



national**grid**ESO

**National Electricity Transmission System Status Report**  
Monday 14 October 2019

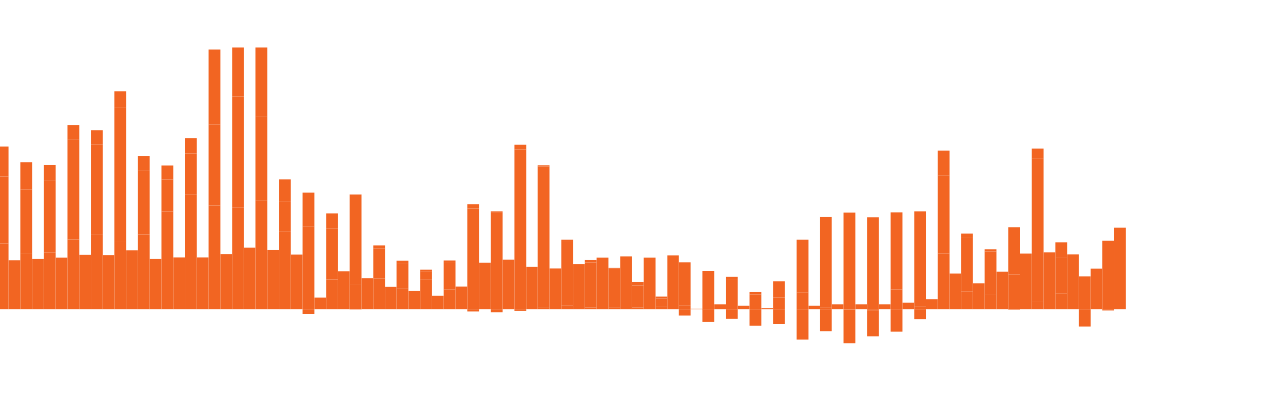
| Today's High Level Risk Status Forecast for the next 24h |  |                |  |
|--|--|----------------|--|
| General Status   |  | Voltage        |  |
| Demand   |  | System Inertia |  |
| System Margins   |  | Weather        |  |
| Generation   |  | Transmission   |  |
| Active Constraints                                       |  |                |  |

|                                 |            |        |
|---------------------------------|------------|--------|
| <a href="#">System Warnings</a> | None       |        |
| Current BMU Largest Loss Risk   | Generation | 1260MW |
|                                 | Demand     | 560MW  |

**General Status / Issues / Breaking News**

**Last 24 hours' BM spend** **Total: £1380k**

£60k  
£50k  
£40k  
£30k  
£20k  
£10k  
£0k  
-£10k  
-£20k

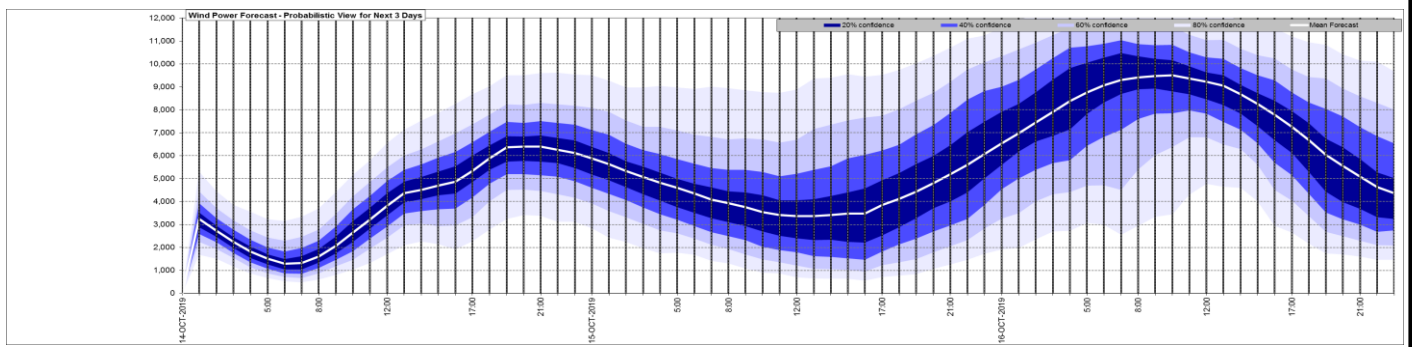


**Yesterday's Market Summary**

|                                       |                     |
|---------------------------------------|---------------------|
| <a href="#">Cash out price (Max)</a>  | £67.50/MWh (SP 1)   |
| <a href="#">Cash Out Price (Min)</a>  | £5.41/MWh (SP 9,10) |
| <a href="#">Peak Demand Yesterday</a> | 32,316 MW           |

| Interconnectors<br>Net Transfer Capacity (MWs) |        |        |                      |
|--|--------|--------|----------------------|
| Today  | Import | Export |                      |
| Netherlands (BritNed)                          | 1000   | 1000   | Fully Available      |
| France (IFA)                                   | 2000   | 2000   | Fully Available      |
| Belgium (Nemo)                                 | 1013   | 1013   | Fully Available      |
| Ireland (EWIC)                                 | 500    | 530    | Fully Available      |
| Northern Ireland (MOYLE)                       | 395    | 500    | Partially available. |

### Wind Power Forecast



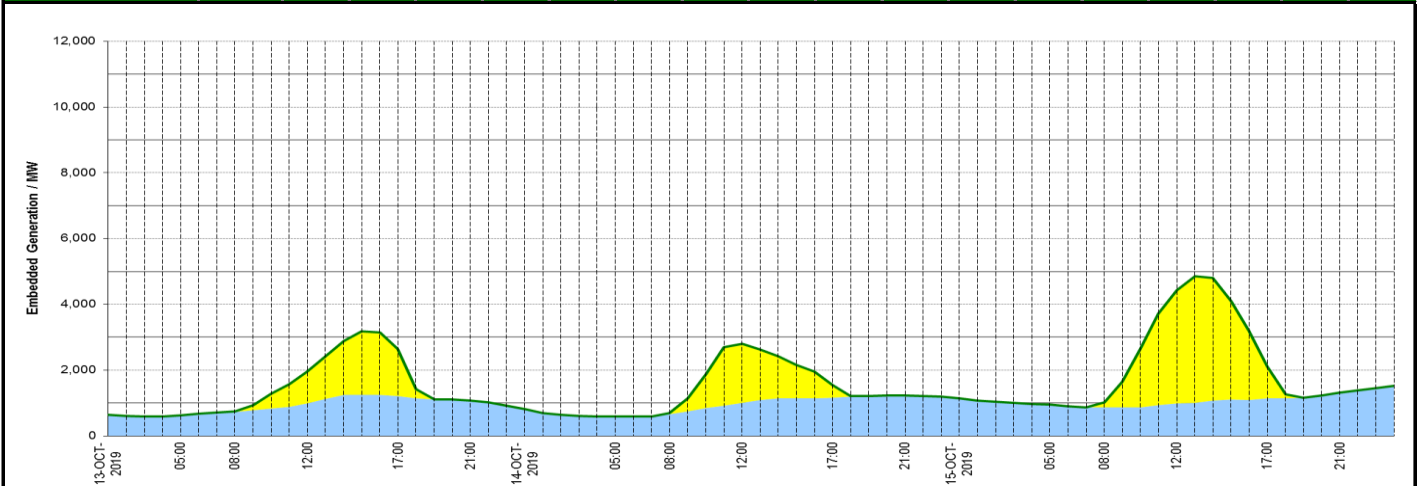
Key:

|                |                |                |                |               |
|----------------|----------------|----------------|----------------|---------------|
| 20% confidence | 40% confidence | 60% confidence | 80% confidence | Mean Forecast |
|----------------|----------------|----------------|----------------|---------------|

### Expected embedded generation (MWs)

#### Embedded Generation Forecast

|                   | 13-OCT-2019 |            |             |             |             | 14-OCT-2019 |            |            |             |             | 15-OCT-2019 |             |            |             |             |             |             |
|-------------------|-------------|------------|-------------|-------------|-------------|-------------|------------|------------|-------------|-------------|-------------|-------------|------------|-------------|-------------|-------------|-------------|
|                   | 05:00       | 08:00      | 12:00       | 17:00       | 21:00       | 00:00       | 05:00      | 08:00      | 12:00       | 17:00       | 21:00       | 00:00       | 05:00      | 08:00       | 12:00       | 17:00       | 21:00       |
| Solar (MW)        | 0           | 5          | 969         | 1440        | 0           | 0           | 0          | 26         | 1794        | 371         | 0           | 0           | 0          | 142         | 3437        | 962         | 0           |
| Wind (MW)         | 624         | 734        | 989         | 1208        | 1076        | 812         | 585        | 660        | 1000        | 1163        | 1227        | 1139        | 947        | 871         | 979         | 1139        | 1311        |
| STOR (MW)         | 0           | 0          | 0           | 0           | 0           | 0           | 0          | 0          | 0           | 0           | 0           | 0           | 0          | 0           | 0           | 0           | 0           |
| <b>Total (MW)</b> | <b>624</b>  | <b>739</b> | <b>1958</b> | <b>2648</b> | <b>1076</b> | <b>812</b>  | <b>585</b> | <b>686</b> | <b>2794</b> | <b>1534</b> | <b>1227</b> | <b>1139</b> | <b>947</b> | <b>1013</b> | <b>4416</b> | <b>2101</b> | <b>1311</b> |



| Weather   | Source  | Commentary  |
|---|---|---|
| Latest forecast (Summary)   | <a href="#">Met Office</a><br><a href="#">SEPA</a><br><a href="#">Natural Resources Wales</a>         | <p><b>Today:</b><br/>Starting bright for many with patchy fog. Areas of heavy rain will spread north across parts of England and Northern Ireland, perhaps thundery in southeast England. Scotland, Wales and western England hanging onto more in the way of dry weather.</p> <p><b>Tonight:</b><br/>Rain clearing most areas but still some showers, mainly affecting Northern Ireland and southwest Britain. Low cloud and patchy fog elsewhere, perhaps a touch of frost in the northwest.</p>  |
| General Weather Concerns e.g. wind, rain, snow, flooding, GB Weather Warnings | <a href="#">Met Office Weather</a><br><a href="#">SEPA</a><br><a href="#">Natural Resources Wales</a> | <p><b>Weather Warnings:</b><br/>Heavy rain leading to a small chance of flooding and disruption.</p> <p>What to expect</p> <ul style="list-style-type: none"> <li>■ There is a small chance that homes and businesses could be flooded, causing damage to some buildings</li> <li>■ There is a small chance of fast flowing or deep floodwater causing danger to life</li> <li>■ Where flooding occurs, there is a slight chance of delays or cancellations to train and bus services</li> <li>■ Spray and flooding could lead to difficult driving conditions and some road closures</li> <li>■ There is a small chance that some communities become cut off by flooded roads</li> <li>■ There is a slight chance of power cuts and loss of other services to some homes and businesses</li> </ul> <p><b>Flood Warning:</b><br/>None</p> |

*Contains public sector information licensed under the Open Government Licence v1.0*

| Further Information        |   |
|----------------------------|---|
| BM Reports                 | <a href="https://www.bmreports.com">https://www.bmreports.com</a>   |
| System Balancing Reports   | <a href="https://www.nationalgrideso.com/balancing-data/system-balancing-reports">https://www.nationalgrideso.com/balancing-data/system-balancing-reports</a>     |
| Forecast Volumes and Costs | <a href="https://www.nationalgrideso.com/balancing-data/forecast-volumes-and-costs">https://www.nationalgrideso.com/balancing-data/forecast-volumes-and-costs</a> |
| NGESO Insights             | <a href="https://www.nationalgrideso.com/insights">https://www.nationalgrideso.com/insights</a>   |