

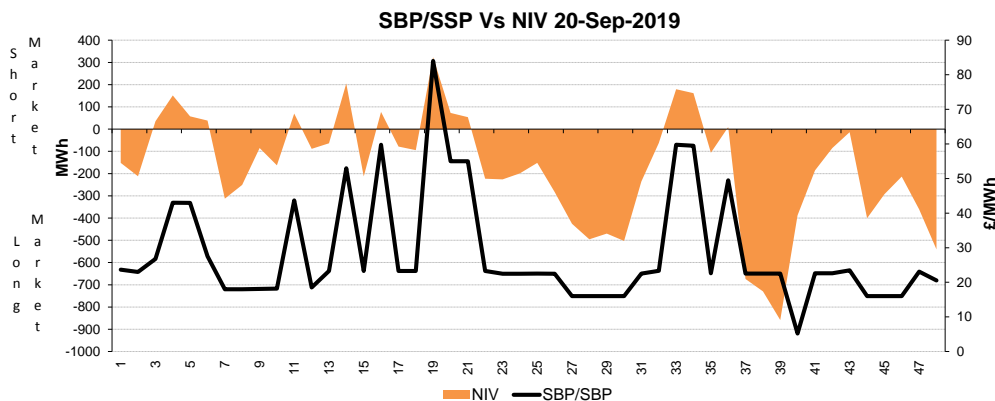
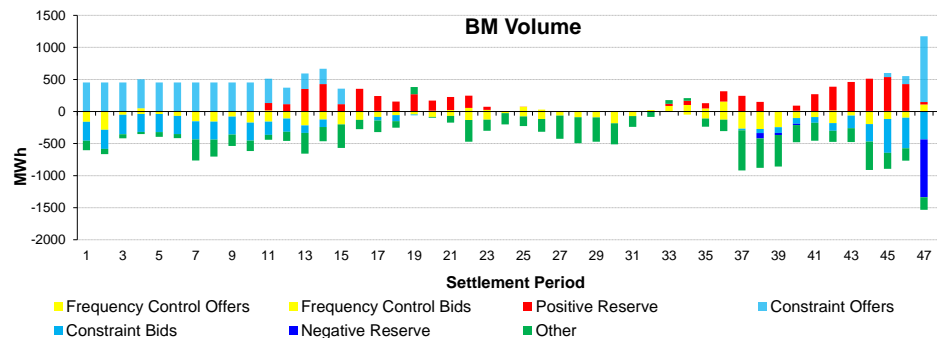
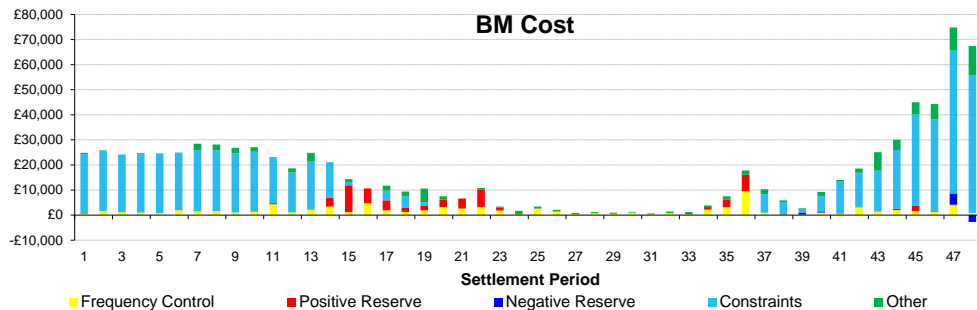
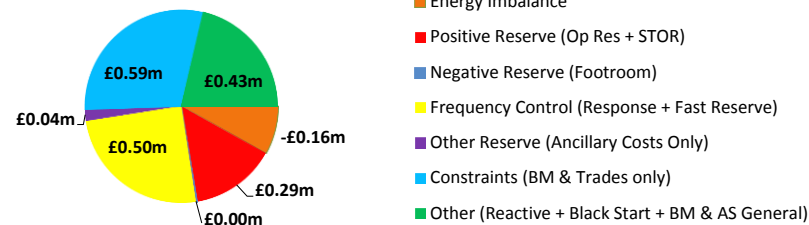
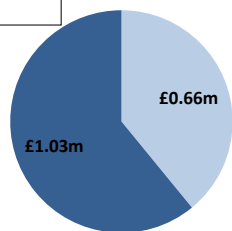
Date: Friday 20 Sep 2019

BSUoS Charge Estimate: £1.69/MWh
Total Outturn: £1.69m

Daily Balancing Costs

BM Cost (Indicative)

AS Cost (Estimate)



Western Link status: Available

Commentary

The market was prevalently long throughout the 24 hours. Interconnectors were traded to provide frequency response and positive margin over the morning peak. Trades on the interconnectors were undertaken in the afternoon again for frequency response, and before midnight for downward regulation. In the evening, Spin Gen was used in response of the interconnectors swing and additional dynamic response was used due to wind volatility. Some BM actions were required in the late evening to solve power flow restrictions in Scotland and in South of England. Overnight, a mix of trades and BM actions were taken to manage voltage levels in England and to secure RoCoF.