

National Electricity
Transmission System Status Report



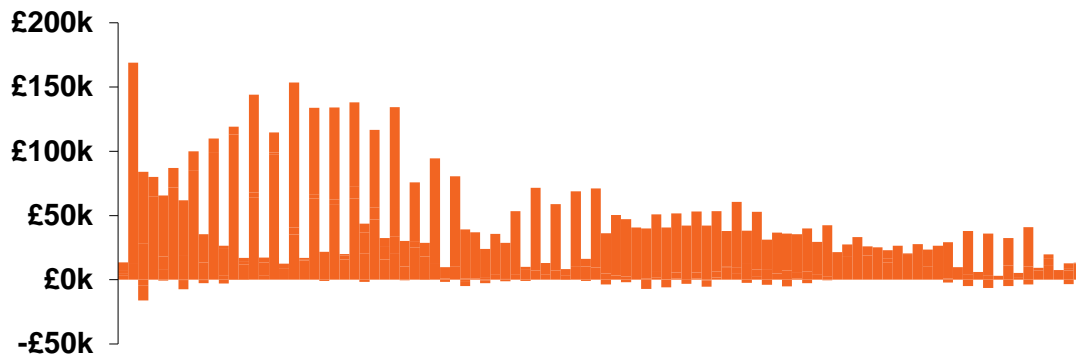
nationalgridESO

National Electricity Transmission System Status Report
Thursday 12 September 2019

Today's High Level Risk Status Forecast for the next 24h			
General Status		Voltage	
Demand		System Inertia	
System Margins		Weather	
Generation		Transmission	
Active Constraints		IS Systems	

Today's Minimum De-Rated Margin	8856.31 (SP 18)	
System Warnings	None	
Current BMU Largest Loss Risk	Generation	1260MW
	Demand	560MW

Last 24 hours' BM spend Total

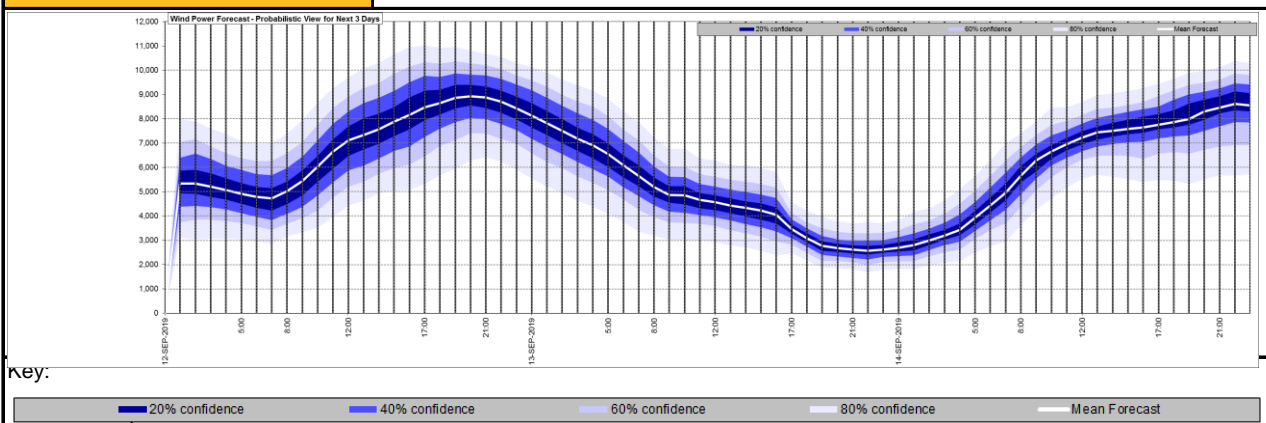


Cash out price (Max)	£59.00/MWh (SP 16,21)
Cash Out Price (Min)	£-61.00/MWh (SP 2,3,4,5,6)
Peak Demand Yesterday	34329 MW

Interconnectors Net Transfer Capacity (MWs)

Today	Import	Export	
Netherlands (BritNed)	1000	1030	Fully available
France (IFA)	2000	2000	Fully Available
Belgium (Nemo)	1013	1013	Fully Available
Ireland (EWIC)	500	530	Fully Available
Northern Ireland (MOYLE)	395	500	Partially available.

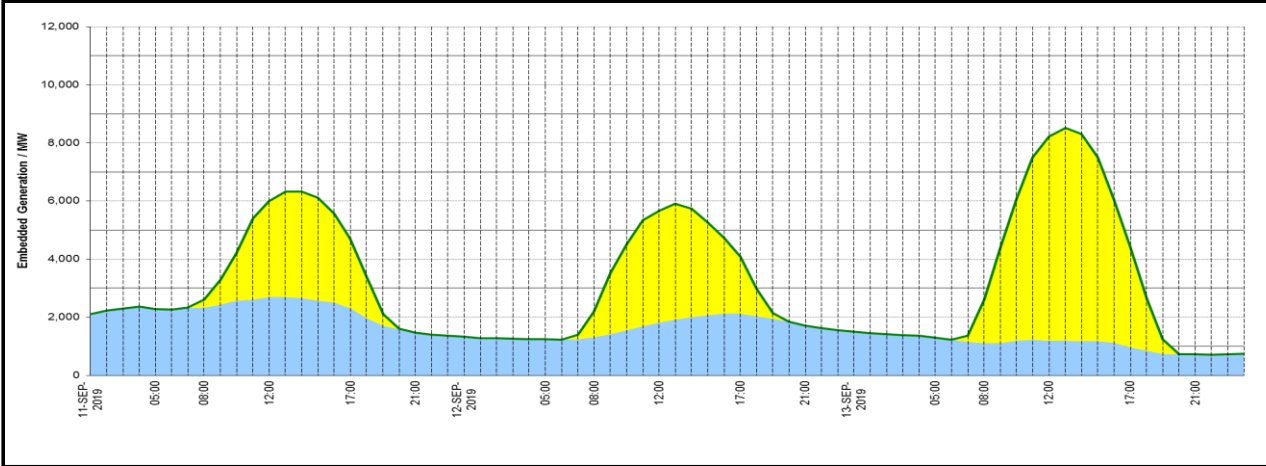
Wind Power Forecast



Expected embedded generation (MWs)

Embedded Generation Forecast

	11-SEP-2019					12-SEP-2019					13-SEP-2019						
	05:00	08:00	12:00	17:00	21:00	00:00	05:00	08:00	12:00	17:00	21:00	00:00	05:00	08:00	12:00	17:00	21:00
Solar (MW)	0	273	3310	2390	0	0	0	889	3852	1957	0	0	0	1504	7024	3452	0
Wind (MW)	2279	2339	2690	2310	1464	1332	1251	1310	1816	2129	1717	1505	1304	1103	1201	966	723
STOR (MW)	0	0	0	0	0	0	0	0	0	0	0	0	0	0	0	0	0
Total (MW)	2279	2612	6000	4700	1464	1332	1251	2199	5668	4086	1717	1505	1304	2607	8225	4418	723



Weather	Source	Commentary
Latest forecast (Summary)	Met Office SEPA Natural Resources Wales	<p>Today: Some heavy rain in Northern Ireland, Scotland and parts of northern England this morning, but brightening up later. Elsewhere across England and Wales rather cloudy in the west with drizzle on hills, but some bright spells in the east.</p> <p>Tonight: Clear in northern England, Northern Ireland and Scotland, except some showers in northwest Scotland. England and Wales cloudy with some light rain, clearing by morning. Chilly, with some fog patches.</p>
General Weather e.g. wind, rain, snow, flooding, GB Weather Warnings	Met Office Weather Warnings SEPA Natural Resources Wales	<p>Weather Warnings: No warnings</p> <p>Flood Warnings: No flood warnings are currently in force</p>

Contains public sector information licensed under the Open Government Licence v1.0

Further Information	
BM Reports	https://www.bmreports.com
System Balancing Reports	https://www.nationalgrideso.com/balancing-data/system-balancing-reports
Forecast Volumes and Costs	https://www.nationalgrideso.com/balancing-data/forecast-volumes-and-costs
NGESO Insights	https://www.nationalgrideso.com/insights