

**National Electricity
Transmission System Status Report**



National Electricity Transmission System Status Report
Friday 30 August 2019

Today's High Level Risk Status Forecast for the next 24h			
General Status		Voltage	
Demand		System Inertia	
System Margins		Weather	
Generation		Transmission	
Active Constraints			

Today's Minimum De-Rated Margin	12532 (SP 19)	
System Warnings	None	
Current BMU Largest Loss Risk	Generation	1260MW
	Demand	560MW

Balancing Costs

Last 24 hours' ENCC BM spend

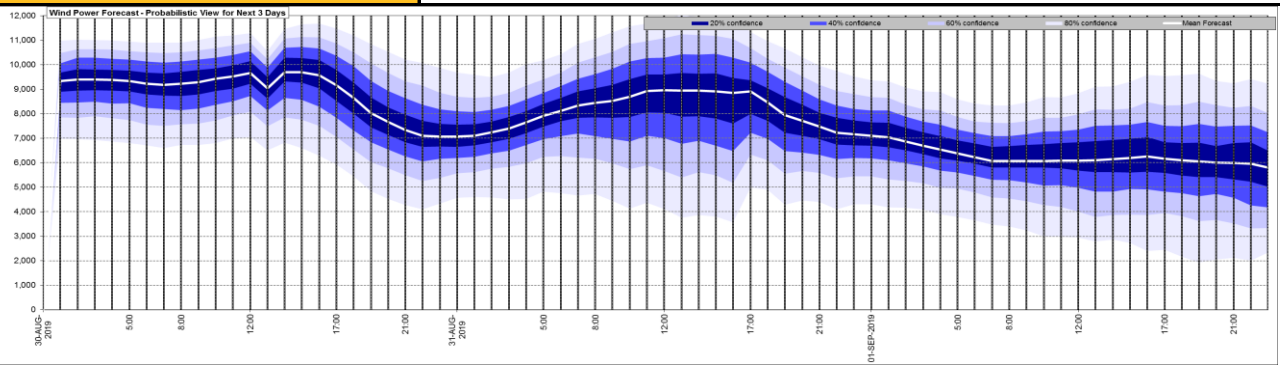


Yesterday's Market Summary

Cash out price (Max)	£55.00 (SP 38)
Cash Out Price (Min)	£15.00 (SP 35,44)
Peak Demand Yesterday	29,762

Interconnectors Net Transfer Capacity (MWs)			
Today	Import	Export	
Netherlands (BritNed)	1000	1030	Fully available
France (IFA)	2000	2000	Fully Available
Belgium (Nemo)	1013	1013	Fully Available
Ireland (EWIC)	500	530	Fully Available
Northern Ireland (MOYLE)	395	500	Partially available.

Wind Power Forecast



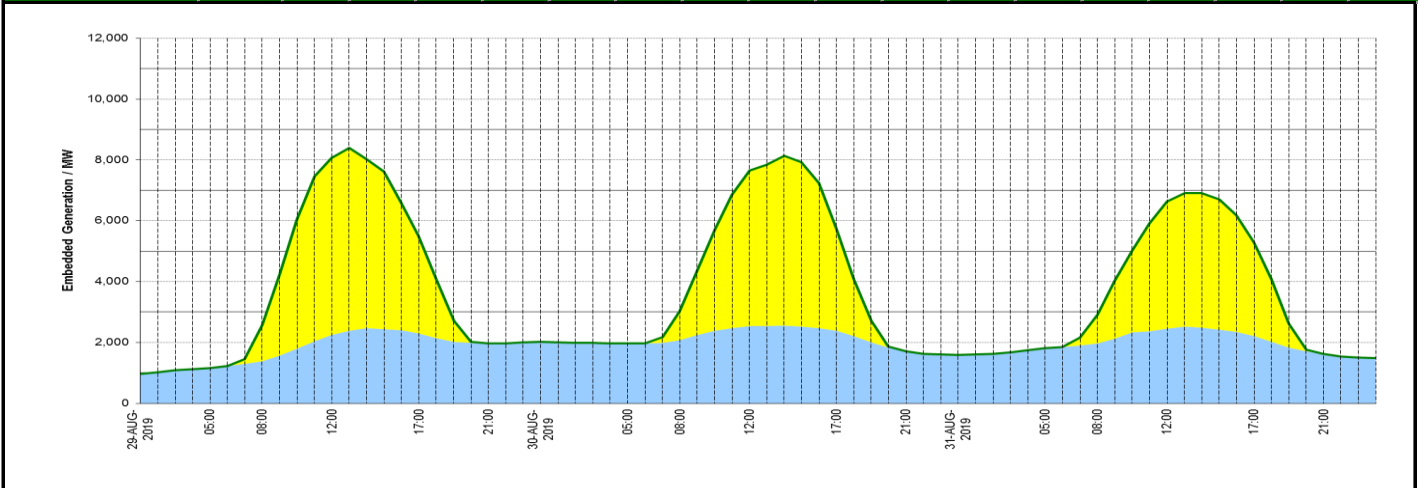
Key:

- 20% confidence
- 40% confidence
- 60% confidence
- 80% confidence
- Mean Forecast

Expected embedded generation (MWs)

Embedded Generation Forecast

	29-AUG-2019					30-AUG-2019					31-AUG-2019						
	05:00	08:00	12:00	17:00	21:00	00:00	05:00	08:00	12:00	17:00	21:00	00:00	05:00	08:00	12:00	17:00	21:00
Solar (MW)	0	1190	5820	3200	2	0	0	939	5100	3337	0	0	0	964	4179	3068	0
Wind (MW)	1164	1377	2251	2300	1967	2014	1969	2078	2544	2385	1707	1593	1812	1964	2462	2216	1619
STOR (MW)	0	0	0	0	0	0	0	0	0	0	0	0	0	0	0	0	0
Total (MW)	1164	2567	8071	5500	1969	2014	1969	3017	7644	5722	1707	1593	1812	2928	6641	5284	1619



Weather	Source	Commentary
Latest forecast (Summary)	Met Office SEPA Natural Resources Wales	<p>Today: Cloudy across much of the north, especially Northern Ireland and Scotland where it will be windy with some persistent, occasionally heavy, rain. Dry across central and southern parts with some warm sunny spells, although breezy at times.</p> <p>Tonight: Rain, often heavy, for Northern Ireland and much of Scotland. A risk of showers for Wales and northwest England. Elsewhere, dry with clear spells and a chance of patchy fog.</p>
General Weather Concerns e.g. wind, rain, snow, flooding, GB Weather Warnings	Met Office Weather SEPA Natural Resources Wales	<p>Weather Warnings: An area of heavy rain is expected to become slow-moving across much of Scotland, especially affecting western and central hills.</p> <p>Flood Warnings: None</p>

Contains public sector information licensed under the Open Government Licence v1.0

Further Information	
BM Reports	https://www.bmreports.com
System Balancing Reports	https://www.nationalgrideso.com/balancing-data/system-balancing-reports
Forecast Volumes and Costs	https://www.nationalgrideso.com/balancing-data/forecast-volumes-and-costs
NGESO Insights	https://www.nationalgrideso.com/insights