

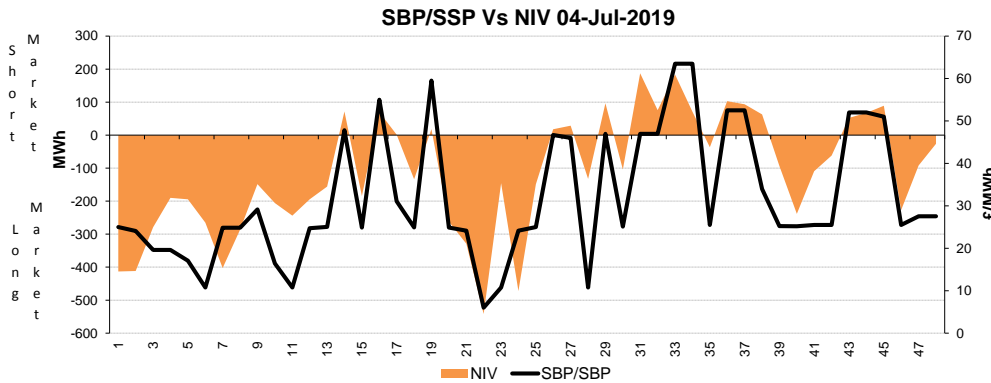
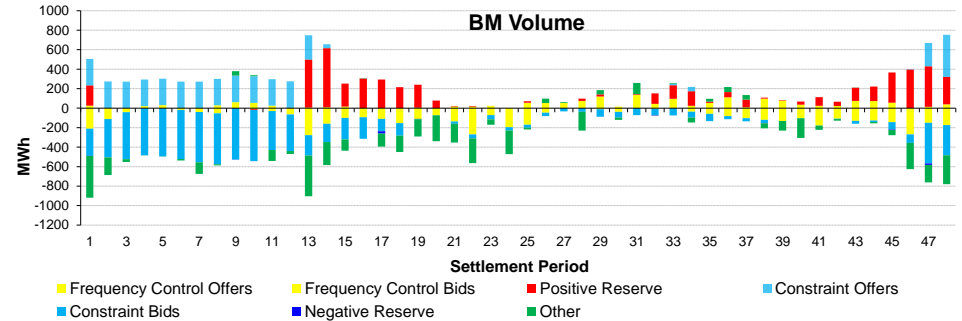
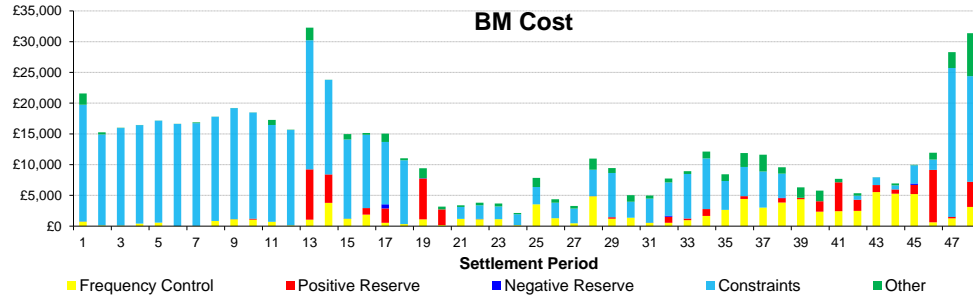
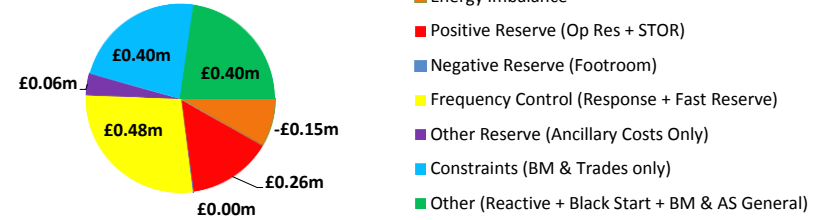
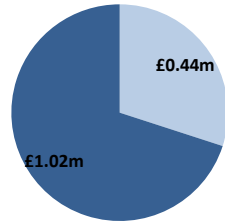
Date: Thursday 04 Jul 2019

BSUoS Charge Estimate: £1.56/MWh
Total Outturn: £1.46m

Daily Balancing Costs



BM Cost (Indicative)
AS Cost (Estimate)



Western Link status: Available

Commentary

NIV was long for the majority of the day; up to 200MW of STOR was run in the morning and up to 300MW of STOR was run in the evening. Optional Spin Gen was utilised in the evening to manage uncertainty in the demand forecast.

Interconnector trades were required to manage RoCoF for the early morning period. Trades and BM actions were needed to manage power flow restrictions in Scotland during afternoon and evening period. Voltage levels for South of England area during early morning period was managed using BM actions.