

**National Electricity
Transmission System Status Report**



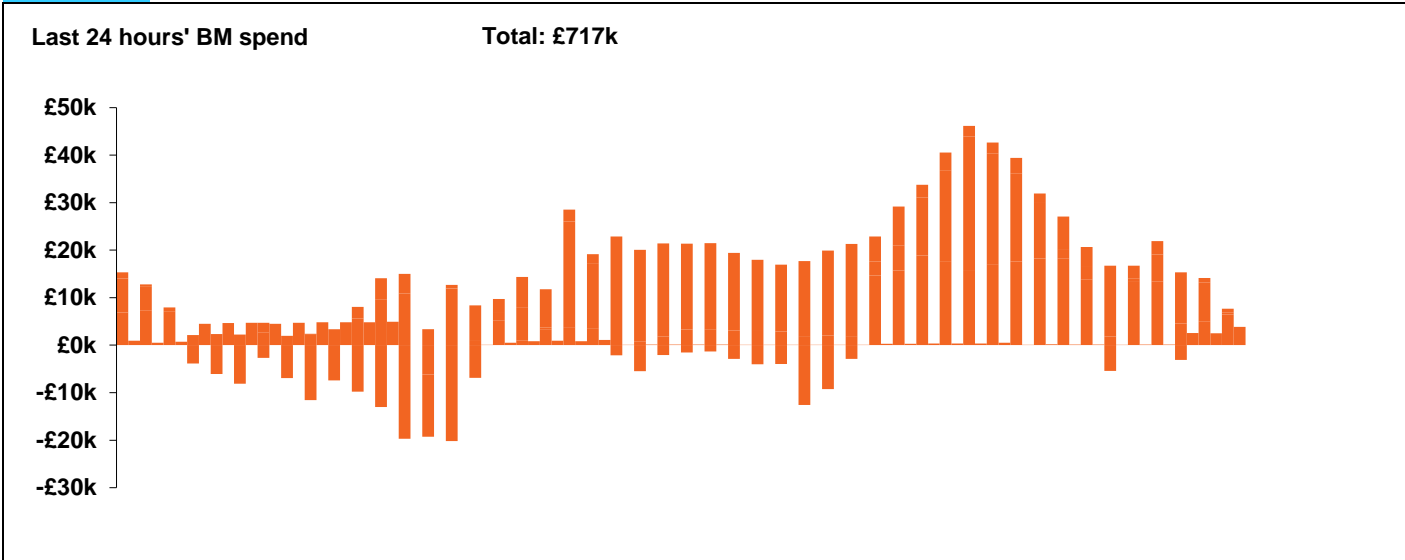
national**grid**ESO

National Electricity Transmission System Status Report
Monday 24 June 2019

Today's High Level Risk Status Forecast for the next 24 hours			
General Status		Voltage	
Demand		System Inertia	
System Margins		Weather	
Generation		Transmission	
Active Constraints			

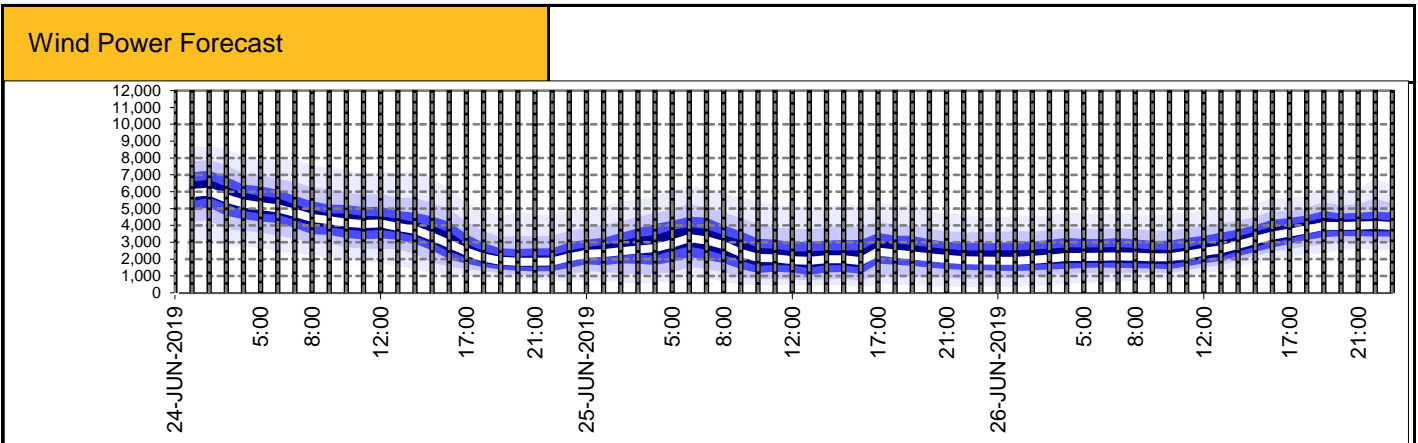
Today's Minimum De-Rated Margin	1369.45 MW (SP37)	
System Warnings	None	
Current BMU Largest Loss Risk	Generation	1200MW
	Demand	560MW

Balancing Costs



Yesterday's Market Summary	
Cash out price (Max)	£60.00/MWh (SP37 38)
Cash Out Price (Min)	£15.00/MWh (SP14)
Peak Demand Yesterday	28,777 MW

Interconnectors Net Transfer Capacity (MWs)			
Today	Import	Export	
Netherlands (BritNed)	1000	1030	Fully available
France (IFA)	1000	1000	Bipole 1 on outage
Belgium (Nemo)	1013	1013	Fully Available
Ireland (EWIC)	500	530	Fully Available
Northern Ireland (MOYLE)	395	500	Partially available.

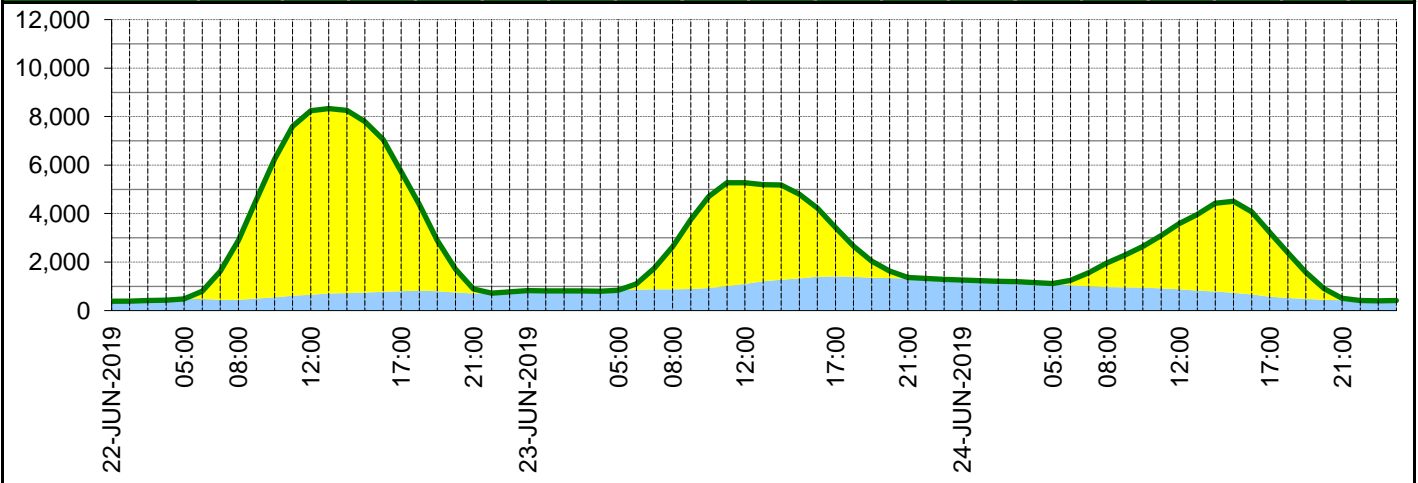


Key:

- 20% confidence
- 40% confidence
- 60% confidence
- 80% confidence
- Mean Forecast

Expected embedded generation (MWs)

Embedded Generation Forecast	22-JUN-2019					23-JUN-2019					24-JUN-2019						
	05:00	08:00	12:00	17:00	21:00	00:00	05:00	08:00	12:00	17:00	21:00	00:00	05:00	08:00	12:00	17:00	21:00
Solar (MW)	5	2460	7590	4940	193	0	3	1752	4179	2020	43	0	0	987	2705	2649	86
Wind (MW)	470	441	650	796	704	823	832	876	1099	1409	1324	1258	1110	972	877	576	423
STOR (MW)	0	0	0	0	0	0	0	0	0	0	0	0	0	0	0	0	0
Total (MW)	475	2901	8240	5736	897	823	835	2628	5278	3429	1367	1258	1110	1959	3582	3225	509



Weather	Source	Commentary
Latest forecast (Summary)	Met Office SEPA Natural Resources Wales	<p>Today: Thundery rain will move north across Scotland, but wettest in the east where combined with extensive low cloud. Elsewhere, after a murky start, some brightness developing but also further thunderstorms. Warm and humid for many and driest in the southwest.</p> <p>Tonight: Heavy rain clearing eastern Scotland. Further thunderstorms moving north across southern, central and eastern England, with low cloud developing later. Drier further west and staying warm and muggy for many.</p>
General Weather Concerns e.g. wind, rain, snow, flooding, GB Weather Warnings	Met Office Weather SEPA Natural Resources Wales	<p>Weather Warnings:</p> <p>Yellow Warnings of Thunderstorms for East Midlands East of England London & South East England North East England North West England South West England Wales West Midlands Yorkshire & Humber from 00:00 hours.</p> <p>Yellow Warnings of rain for Central, Tayside & Fife Grampian Highlands & Eilean Siar SW Scotland, Lothian Borders Strathclyde from 00:00 BST.</p> <p>Flood Warnings: Heavy rainfall may lead to some flooding and travel disruption.</p>

Contains public sector information licensed under the Open Government Licence v1.0

Further Information	
BM Reports	https://www.bmreports.com
System Balancing Reports	https://www.nationalgrideso.com/balancing-data/system-balancing-reports
Forecast Volumes and Costs	https://www.nationalgrideso.com/balancing-data/forecast-volumes-and-costs
NGESO Insights	https://www.nationalgrideso.com/insights