

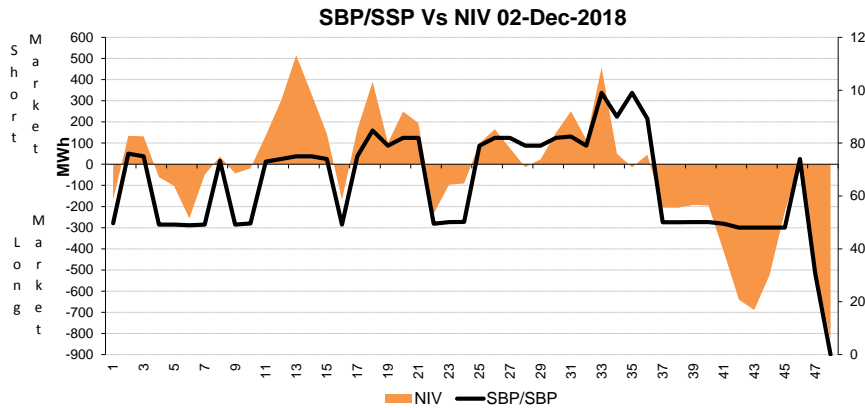
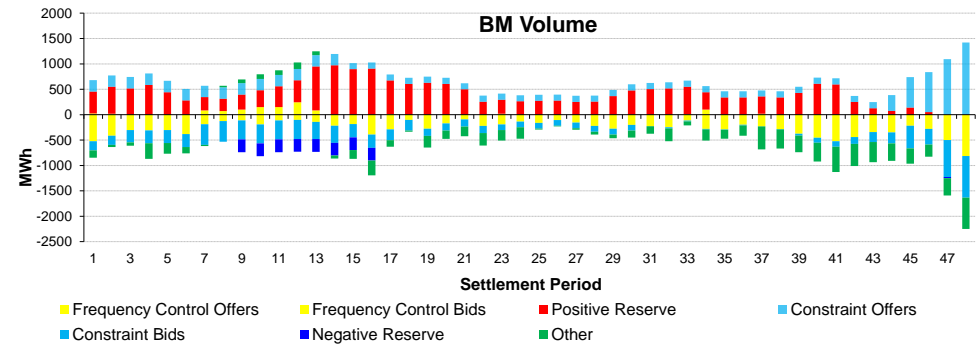
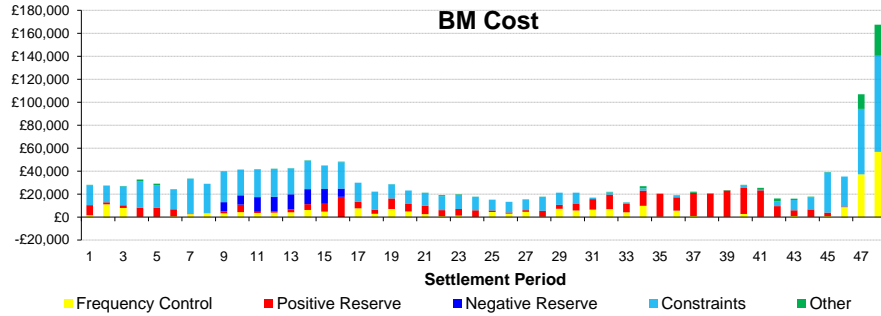
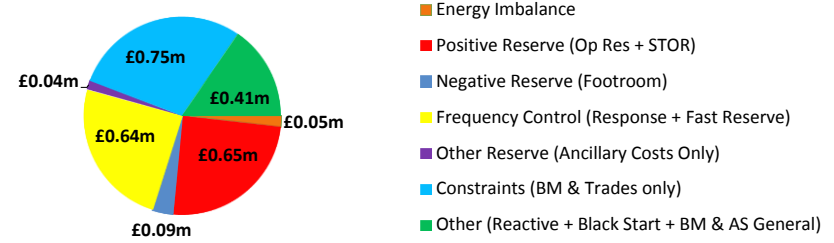
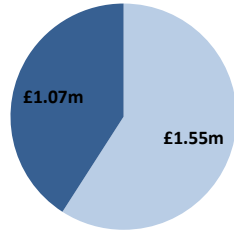
Date: 02/12/2018

BSUoS Charge Estimate: £2.12/MWh
Total Outturn: £2.62m

Daily Balancing Costs



BM Cost (Indicative)
AS Cost (Estimate)



Western Link status: Available

Commentary

The market was short in excess of 1000MW for most of the day. STOR in excess of 350MW was run between the morning and the afternoon and in excess of 800MW during the darkness peak, as demand was higher than forecast up to 100MW and wind was up to 800MW below forecast. Overnight, interconnectors were traded for downward regulation. Overnight trades taken for RoCoF were extended through the afternoon and were also supported by trades and BM actions on generating units. Large volume of trades were undertaken until the afternoon to manage the voltage levels mainly in Scotland. Before midnight, BM actions and some trades were taken to manage the voltage in Scotland, England and Wales.