

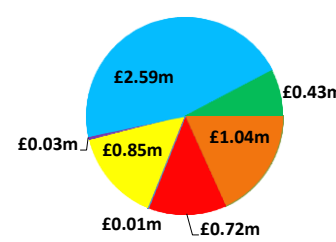
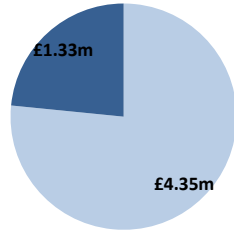
Date: 28/11/2018

BSUoS Charge Estimate: £3.61/MWh
Total Outturn: £5.68m

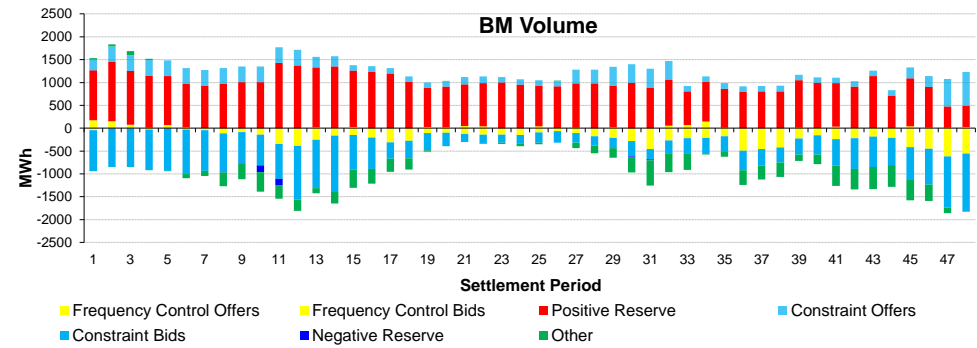
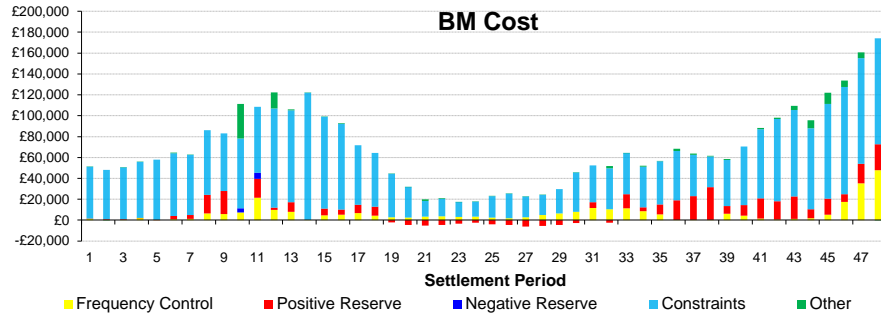
Daily Balancing Costs



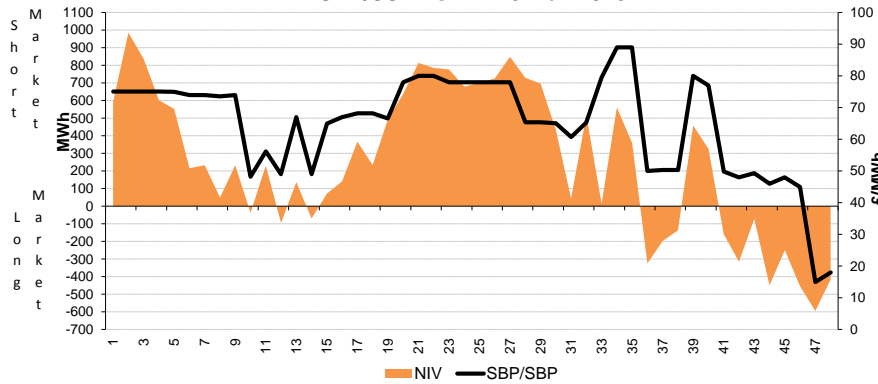
BM Cost (Indicative)
AS Cost (Estimate)



- Energy Imbalance
- Positive Reserve (Op Res + STOR)
- Negative Reserve (Footroom)
- Frequency Control (Response + Fast Reserve)
- Other Reserve (Ancillary Costs Only)
- Constraints (BM & Trades only)
- Other (Reactive + Black Start + BM & AS General)



SBP/SSP Vs NIV 28-Nov-2018



Western Link status: Available

Commentary

The market was short throughout the day, trades were required on the Interconnectors for positive margin throughout the day. ROCOF was resolved via BM actions and trades on the Interconnectors and several BM units. Trades were carried out on the Interconnectors in the afternoon to manage South East constraint issues. With high wind output trades and BM actions were required to manage a constraint in the North of Scotland in addition to BM actions on wind and water to manage power flow restrictions on the network boundary between Scotland and England. Trades and BM actions were required to manage voltage support in the Midlands, North East, South Wales and Scotland.