

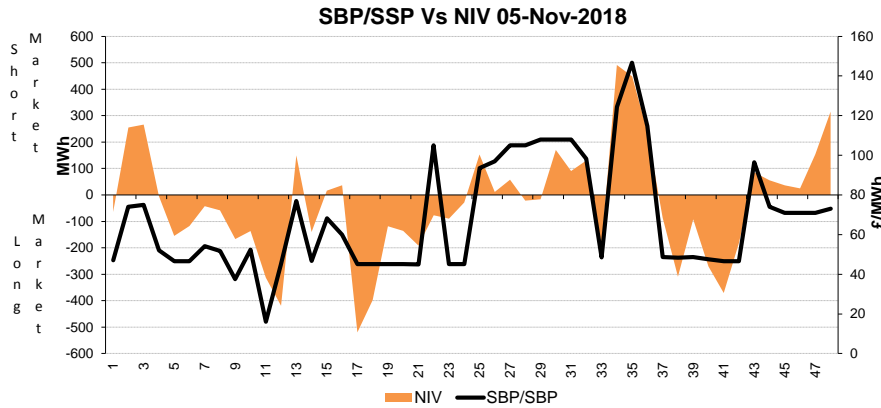
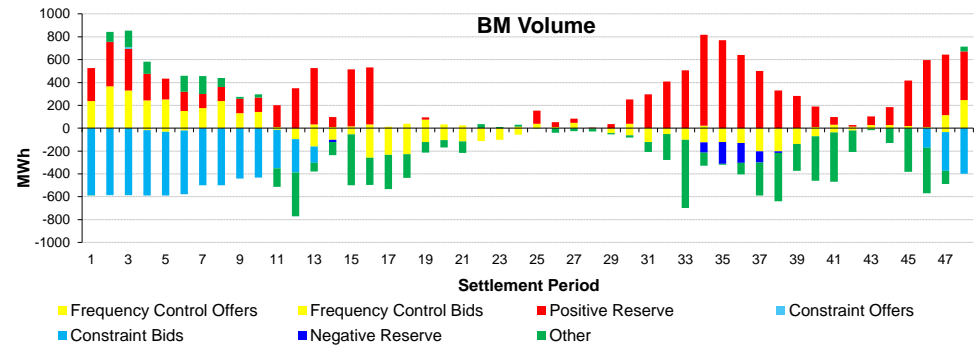
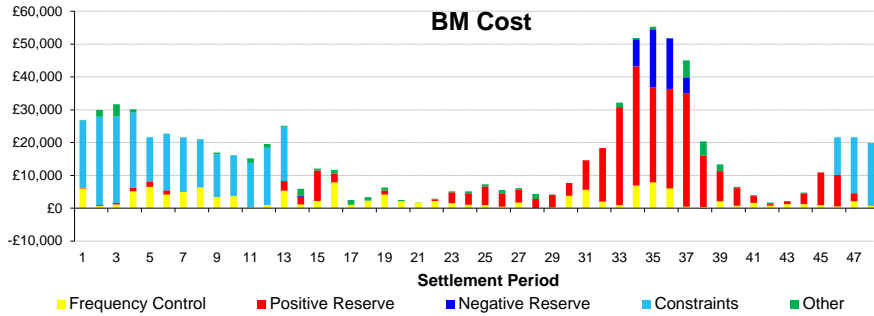
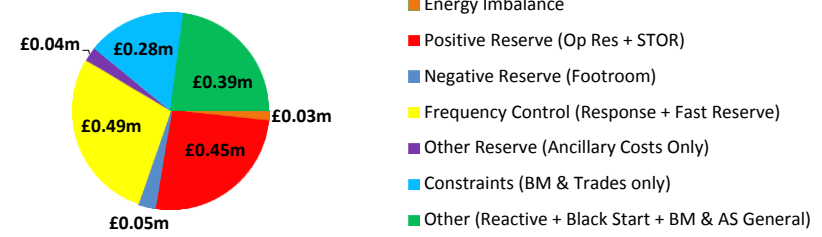
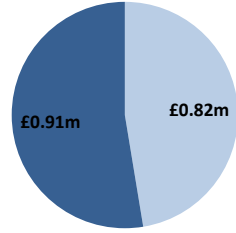
Date: 05/11/2018

BSUoS Charge Estimate: £1.36/MWh
Total Outturn: £1.72m

Daily Balancing Costs



BM Cost (Indicative)
AS Cost (Estimate)



Western Link status: Available

Commentary

Up to 435MW of STOR was run throughout the daytime due to generation and Interconnector shortfalls. Trades were carried out on the Interconnectors over the morning and evening peaks for positive margin. Higher prices over the darkness peak resulted in actions costing up to £189/MWh to meet positive reserve requirements. ROCOF issues were solved via trades on the Interconnectors and a BM unit in addition to a small number of BM actions. BM actions were required to manage constraint issues in Scotland just before midnight. No system actions were required for voltage control.